

CHERIF AMOR

DESIGN PORTFOLIO

CHERIF'S PROJECTS

Cherif Amor, Ph.D., EDRA, IDEC, & IIDA
Chair, Interior Design Department, Virginia Commonwealth University-Qatar
Chair Environmental Design Research Association, ID Network
mcAmor@vcu.edu
(974) 4402 0588 —P.
(974) 4402 1425 —F.

Islamic Center of the South Plains

Texas

Project Budget: \$850,000.00

Project Sq-Ft: 6400.00

Multipurpose Hall and extension of existing structure including architecture, interior design and landscape architecture.

Address: 3419 LaSalle Ave., Lubbock TX 79407

Cultural Student Center

Texas

Project Budget: \$500,000.00

Project Sq-Ft: 3,000

Designed and supervised the construction process—architecture, landscape architecture and interior design.

Tasks: 1) Conducted meetings with the Board of Trustees for data collection, 2) conducted meetings with community, 3) designed the project 4) performed sessions of feed back with local professional practitioners and educators, 5) made revisions, 6) conducted fundraising, 7) presented the final revisions to the community, and 8) supervised the construction process.

Address: 2222 15th Street, Lubbock, TX 79409

ICSP Bathrooms

Texas

Project Budget: 50,000.00

Project Sq.-Ft: 1200

Renovation: including planning, fund raising, and design.

Tasks: planning, community meeting, ICSP Board meeting, design, specification furniture, fixture, and equipment (FF&E), made revisions, conducted fund raising, and supervised the construction process.

Project Address: 3419 Lasalle Ave., Lubbock, TX 79407

Lobby and Main Entry

Texas

Project Budget: 250,000.00

Project Sq-Ft: Lobby and Conference Room

Renovation: including planning, fund raising, and design.

Tasks: planning, community meeting, ICSP Board meeting, design, specification furniture, fixture, and equipment (FF&E), made revisions, conducted fund raising, and will supervise the construction process.

Project Address: 3419 LaSalle Ave., Lubbock, TX 79407

CONSTRUCTION PROGRESS



CONSTRUCTION PROGRESS



CONSTRUCTION PROGRESS



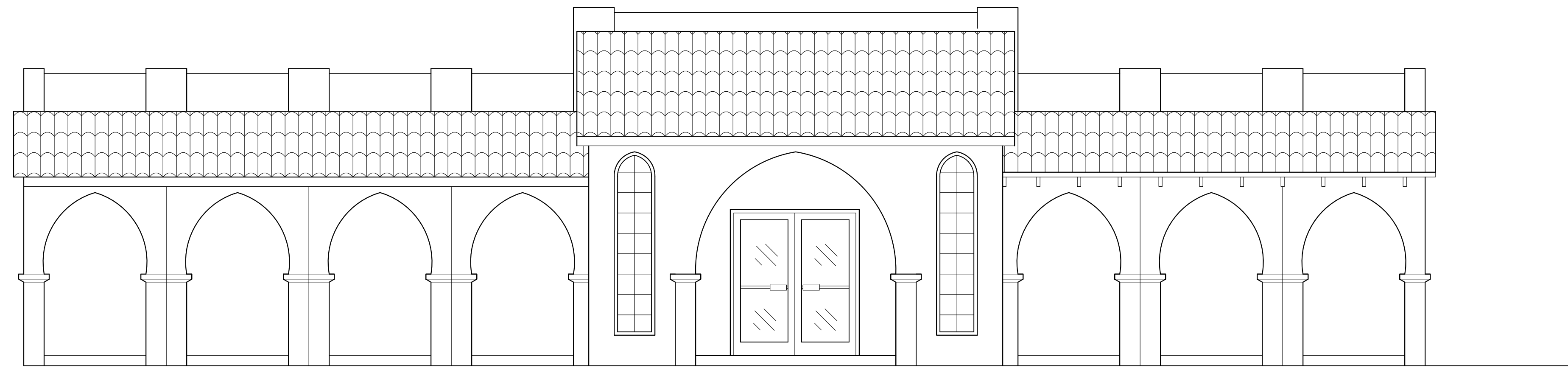
BEFORE & AFTER



ISLAMIC CENTER

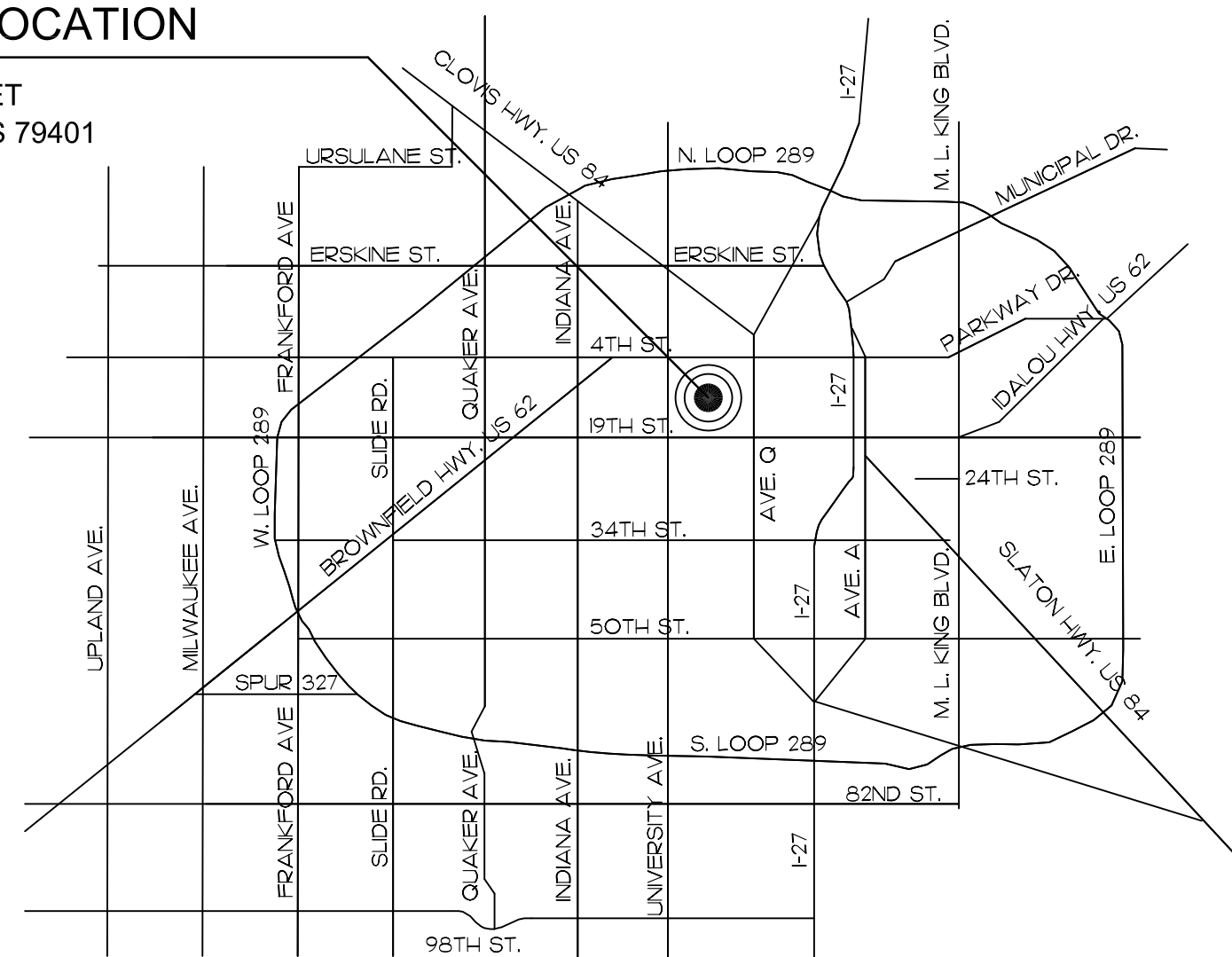
2222 15TH STREET
LUBBOCK, TEXAS 79401

APRIL 28, 2009



PROJECT LOCATION

2222 15TH STREET
LUBBOCK, TEXAS 79401



VICINITY MAP
SCALE: NONE



BUILDING CODE

2003 INTERNATIONAL BUILDING CODE
UNIFORM FIRE CODE 1997
NATIONAL ELECTRICAL CODE 1999
INTERNATIONAL ENERGY CONSERVATION CODE 2000
CITY OF LUBBOCK ORDINANCES AND AMENDMENTS

OCCUPANCY: GROUP B
CONSTRUCTION TYPE: TYPE II
GROSS AREA: 2,780 SQ FT BUILDING
480 SQ FT COVERED PORCH
TOTAL OCCUPANT LOAD: 113
REQUIRED EXITS: 2

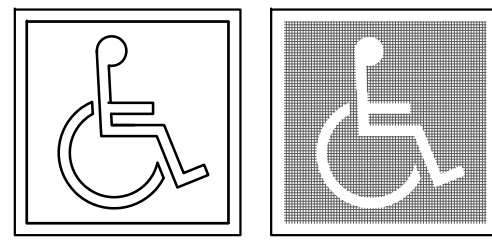
PARKING REQUIREMENTS 1 SPACE PER 4 CHAIRS IN
GATHERING SPACE
OCCUPANCY OF GATHERING SPACE: 49
SPACES REQUIRED: 12
SPACES PROVIDED: 13
HANDICAP SPACE REQUIRED: 1

INDEX TO SHEETS

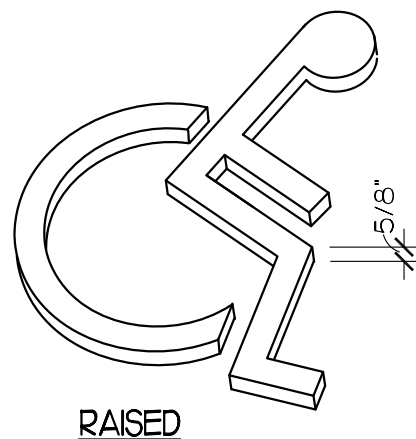
	COVER SHEET
TAS	TEXAS ACCESSIBILITY STANDARDS
A101	SITE PLAN
A201	FLOOR PLANS & ENLARGED PLANS
A301	MILLWORK & INTERIOR ELEVATIONS
A401	EXTERIOR ELEVATIONS & SECTIONS
A501	SCHEDULES & DETAILS
A601	REFLECTED CEILING PLAN
A701	ELECTRICAL PLAN
A801	MECHANICAL PLAN
P1.0	PLUMBING PLAN

hd
HUNN
DESIGNS
www.hunn designs.com

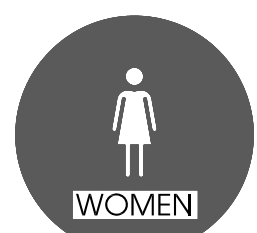
SET NUMBER



INTERNATIONAL ACCESSIBILITY SYMBOL



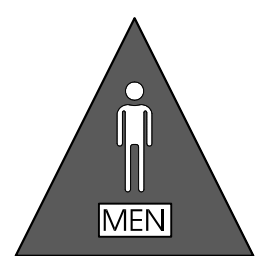
RAISED



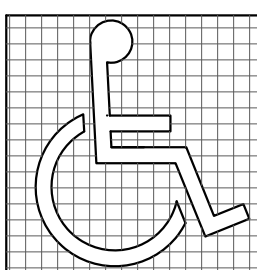
WOMEN



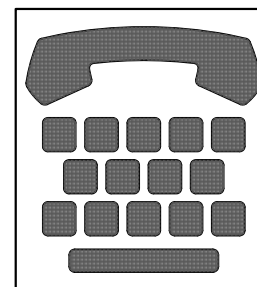
RESTROOMS



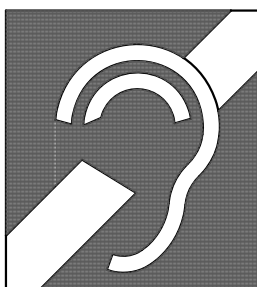
MEN



PROPORTIONS INTERNATIONAL SIGN OF ACCESSIBILITY



INTERNATIONAL TDD SYMBOL



INTERNATIONAL SYMBOL OF ACCESS FOR HEARING IMPAIRED

A SIGNS & PICTOGRAMS

LETTERS AND NUMBERS:

- 1. LETTERS AND NUMBERS ON SIGNS SHALL BE RAISED 1/32" MINIMUM AND SHALL BE SANS-SERIF UPPERCASE CHARACTERS ACCOMPANIED BY GRADE 2 BRAILLE. (SEC. 117B.5.6)
2. RAISED CHARACTERS OR SYMBOLS SHALL BE A MINIMUM OF 5/16" HIGH. (SEC. 117B.5.2)
3. PICTORIAL SYMBOL SIGNS (PICTOGRAMS) SHALL BE ACCOMPANIED BY THE EQUIVALENT VERBAL DESCRIPTION PLACED DIRECTLY BELOW THE PICTOGRAM. THE BORDER DIMENSION OF THE PICTOGRAM SHALL BE A MINIMUM OF 6" N-H EIGHT. (SEC. 117B.5.3)
4. LETTERS AND NUMBERS ON SIGNS SHALL HAVE A WIDTH-TO-HEIGHT RATIO OF BETWEEN 3/5 AND 1/1 AND A STROKE WIDTH-TO-HEIGHT RATIO BETWEEN 1/5 AND 1/10. (SEC. 117B.5.3)
5. CHARACTERS AND SYMBOLS SHALL CONTRAST WITH THEIR BACKGROUND, EITHER LIGHT CHARACTERS ON A DARK BACKGROUND OR DARK CHARACTERS ON A LIGHT BACKGROUND. (SEC. 117B.5.5)
6. CHARACTERS AND NUMBERS ON SIGNS SHALL BE SIZED ACCORDING TO THE VIEWING DISTANCE FROM WHICH THEY ARE TO BE READ. THE MINIMUM HEIGHT IS NEARLY USED USING AN UPPER CASE 'X'. LOWER CASE CHARACTERS ARE PERMITTED. FOR SIGNS SUSPENDED OR PROJECTED ABOVE THE FINISH FLOOR IN COMPLIANCE WITH SECTION 102B, THE MINIMUM CHARACTER HEIGHT SHALL BE 3". (SEC. 117B.5.4)
7. CONTRACTED GRADE 2 BRAILLE SHALL BE USED WHEREVER BRAILLE SYMBOLS ARE SPECIFICALLY REQUIRED IN OTHER PORTIONS OF THESE REGULATIONS. DOTS SHALL BE 1/16" ON CENTERS IN EACH CELL. WITH 2/10" SPACE BETWEEN CELLS. DOTS SHALL BE RAISED A MINIMUM OF 1/160" ABOVE THE BACKGROUND. (SEC. 117B.5.3)

SIGN LOCATIONS:

- 8. ALL BUILDING ENTRANCES THAT ARE ACCESSIBLE TO AND USABLE BY PERSONS WITH DISABILITIES AND AT EVERY MAJOR JUNCTION ALONG OR LEADING TO AN ACCESSIBLE ROUTE OF TRAVEL SHALL BE IDENTIFIED WITH A SIGN DISPLAYING THE INTERNATIONAL SYMBOL OF ACCESSIBILITY AND WITH ADDITIONAL DIRECTIONAL SIGNS, AS REQUIRED, TO BE VISIBLE TO PERSONS ALONG APPROACHING PEDESTRIAN WAYS. (SEC. 117B.5.7 & 117B.5.3)
9. WHEN PERMANENT IDENTIFICATION IS PROVIDED FOR ROOMS AND SPACES, RAISED LETTERS SHALL BE PROVIDED AND SHALL BE ACCOMPANIED BY BRAILLE IN CONFORMANCE WITH SECTION 117B.5.6. SIGNS SHALL BE INSTALLED ON THE WALL ADJACENT TO THE LATCH SIDE OF THE DOOR. WHERE THERE IS NO WALL SPACE ON THE LATCH SIDE, INCLUDING AT LEAF DOORS, SIGNS SHALL BE PLACED ON THE NEAREST ADJACENT WALL, PREFERABLY ON THE RIGHT. MOUNTING HEIGHT SHALL BE 60" ABOVE THE FINISH FLOOR TO THE CENTERLINE OF THE SIGN. MOUNTING LOCATION SHALL BE DETERMINED SO THAT THE PERSON MAY APPROACH WITHIN 3" OF THE SIGNAGE WITHOUT ENCOUNTERING PROTRUDING OBJECTS OR STANDING WITHIN THE SWING OF A DOOR. (SEC. 117B.5.7)

INTERNATIONAL SYMBOL OF ACCESSIBILITY:

- 12. STANDARD USED TO IDENTIFY ACCESSIBLE FACILITIES.
13. WHITE FIGURE ON BLUE BACKGROUND, COLOR = 15090 ON FEDERAL STANDARD # 595A.
14. WHEN ENFORCING AGENCY DETERMINES, IF APPROPRIATE, SPECIAL DESIGNS AND COLORS MAY BE APPROVED.
BRaille:
15. USE CONTRASTED GRADE 2 BRAILLE. DOTS TO BE 0.110" ON CENTER IN EACH CELL.
16. 0.2" INCH SPACE BETWEEN CELLS.
17. DOTS RAISED MINIMUM 0.025" INCH ABOVE BACKGROUND.
18. SEE 4/T-4 FOR MORE INFO.

RECESSED FOUNTAINS:

- 1. WITHIN ALCOVES MINIMUM 63" WIDE, MINIMUM 18" DEEP WHEN DOUBLE DRINKING FOUNTAINS ARE REQUIRED AND 32" MIN. CLR. WHEN A SINGLE FOUNTAIN IS PERMITTED.

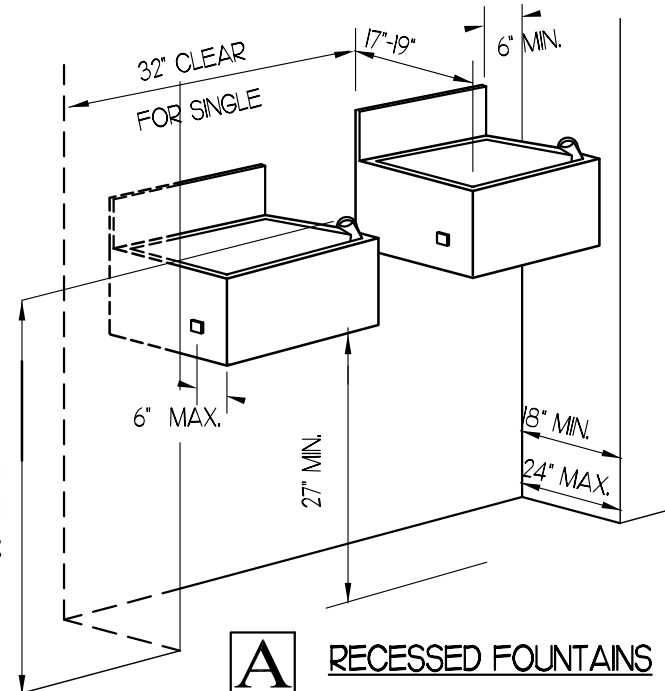
- A. CONTRACTOR SHALL COORDINATE WITH SIZE OF WATER FOUNTAIN TO BE USED AND SIZE ALCOVE ACCORDINGLY COMPLYING WITH REQUIREMENTS AND RECOMMENDATIONS AND COORDINATING WITH THE ARCHITECT.
2. SEE TYPICAL ACCESSIBILITY NOTES SHEET SECTIONS 'R' & 'U'.

PROJECTED FOUNTAINS:

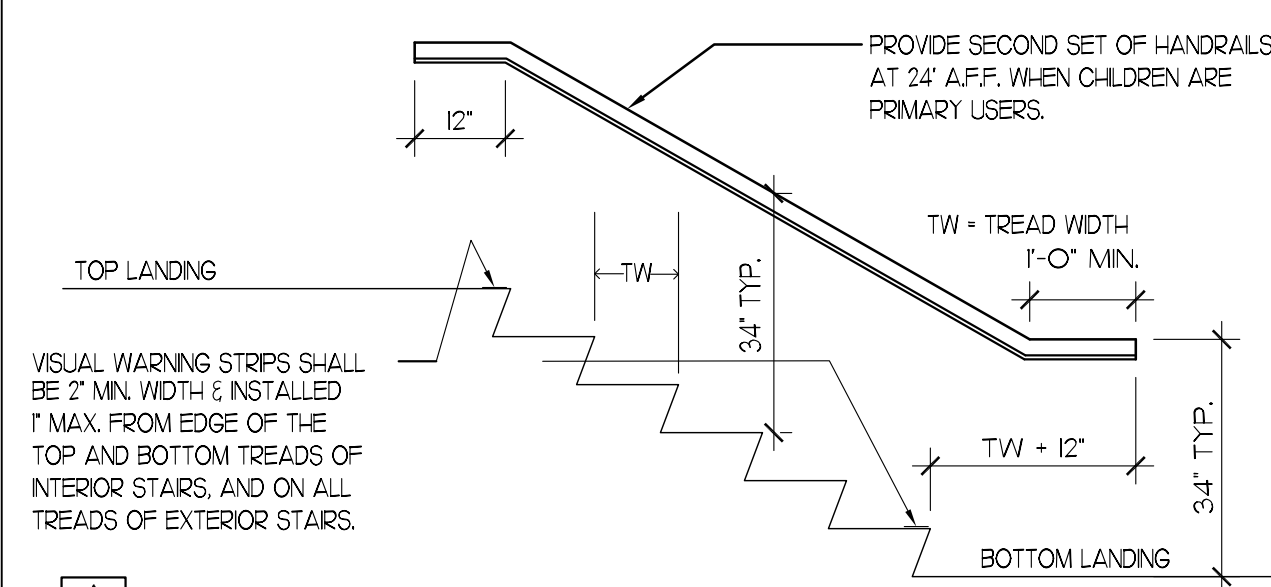
- 1. WARNING FOR THE VISION IMPAIRED AT A PROJECTED DRINKING FOUNTAIN CAN BE PROVIDED BY EITHER OF THE FOLLOWING MEANS:
A. THE SURFACE OF THE FLOOR OR GROUND AT THE DRINKING FOUNTAIN CAN BE OF CONTRASTING COLOR WITH A TEXTURE THAT CONTRASTS IN RESILIENCY WITH THE ADJACENT FINISHED FLOOR MATERIAL, SO THAT IT CAN BE SENSED BY A CANE WITH THE TEXTURE EXTENDING FROM THE WALL TO ONE FOOT BEYOND THE FRONT EDGE OF THE DRINKING FOUNTAIN AND ONE FOOT BEYOND EACH SIDE OF THE FOUNTAIN OR
B. INSTALL WING WALLS ON EACH SIDE OF THE DRINKING FOUNTAIN TO PROJECT OUT FROM THE MAIN WALL AT LEAST AS FAR AS THE DRINKING FOUNTAIN AND TO WITHIN 6" OF THE PATH OF TRAVEL FLOOR FINISH. THERE MUST BE 32" CLEAR BETWEEN THE WING WALLS, OR

NOTE:

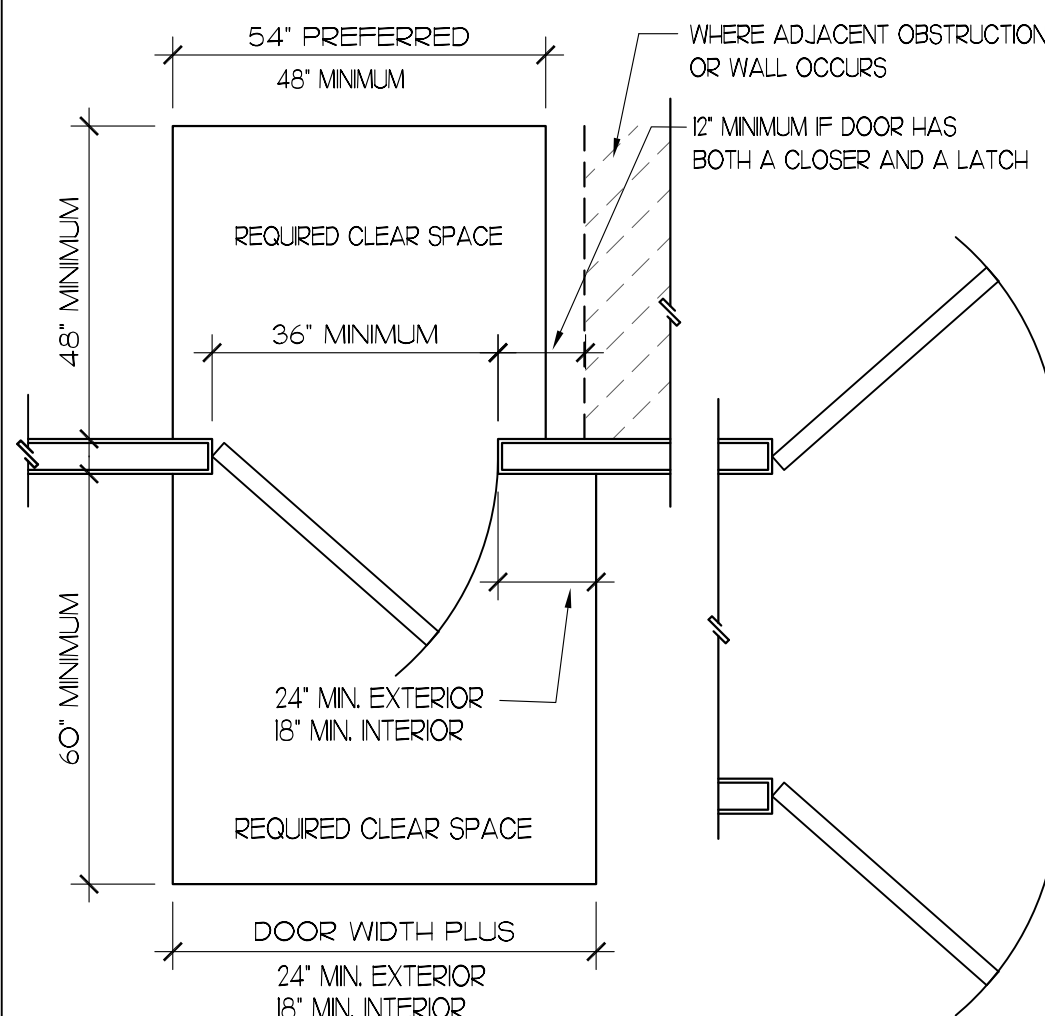
ILLUSTRATIONS SHOWN HERE ARE FOR DIMENSIONAL ACCESSIBILITY PURPOSES ONLY. A SECOND DRINKING FOUNTAIN SHOULD BE PROVIDED AT A MOUNTING HEIGHT SUITABLE TO PERSONS WITH LIMITED PHYSICAL BENDING ABILITY, ADJACENT TO THE ACCESSIBLE FOUNTAIN. MAINTAINING MINIMUM CLEARANCES NOTED AND AS REQUIRED, PROVIDE TEXTURED AREA OF CONTRASTING COLOR TO IDENTIFY WATER FOUNTAIN LOCATION AS NOTED. WHEN FOUNTAIN IS AT AN INTERIOR LOCATION, THE TEXTURED AREA SHALL ALSO BE OF DIFFERENT RESILIENCY THAN THAT OF THE ADJACENT FLOOR SURFACE FINISH. SEE TYPICAL ACCESSIBILITY NOTES SHEET FOR ADDITIONAL REQUIREMENTS.



A RECESSED FOUNTAINS



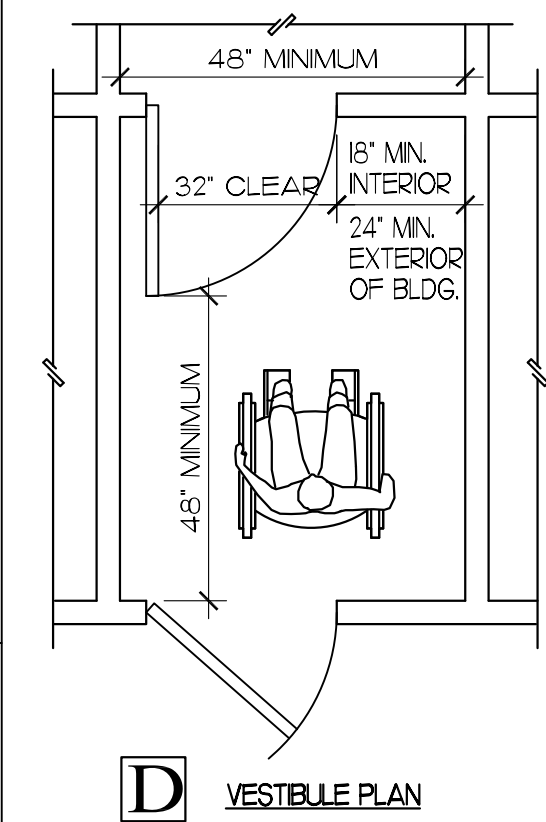
A STAR SECTION



A PLAN

B CORRIDOR PLAN

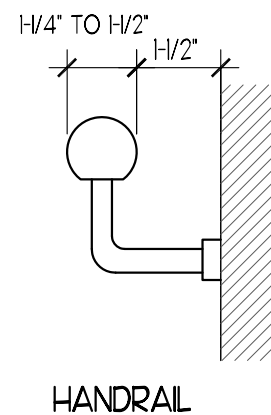
C RAMP LANDING AT DOORWAY PLAN



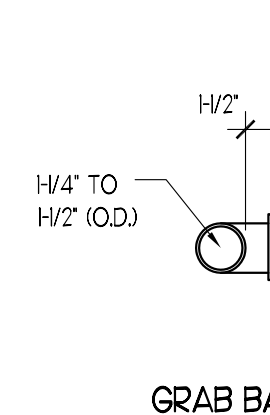
D VESTIBULE PLAN

NOTES:

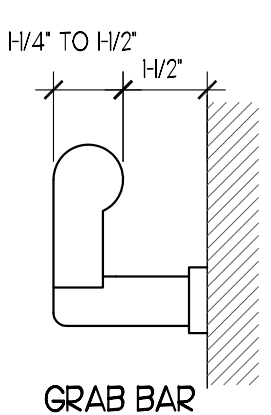
- 1. CLEAR SPACES MUST BE LEVEL TO PREVENT WHEELCHAIRS FROM ROLLING WHEN THE OCCUPANT RELEASES THE WHEEL GRIPS TO REACH FOR THE DOOR. 1/4" PER FOOT IS ALLOWED FOR DRAINAGE.
2. WHERE DOORS OPEN ONTO, BUT NOT INTO A CORRIDOR, THE REQUIRED LEVEL AREA BEYOND THE DOORS MAY BE A MINIMUM OF 48". FOR ADDITIONAL INFORMATION, SEE APPLICABLE NOTES ON TYPICAL ACCESSIBILITY NOTES SHEET.



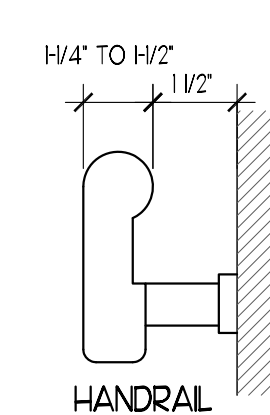
HANDRAIL



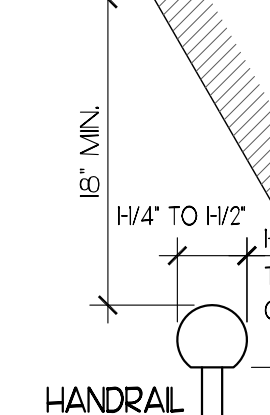
GRAB BAR



GRAB BAR

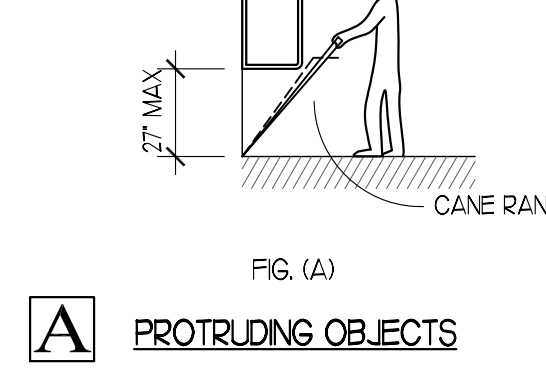
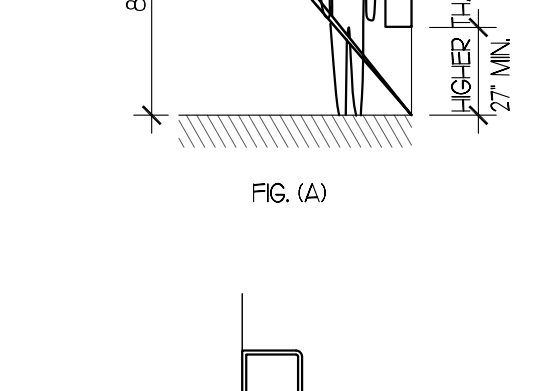
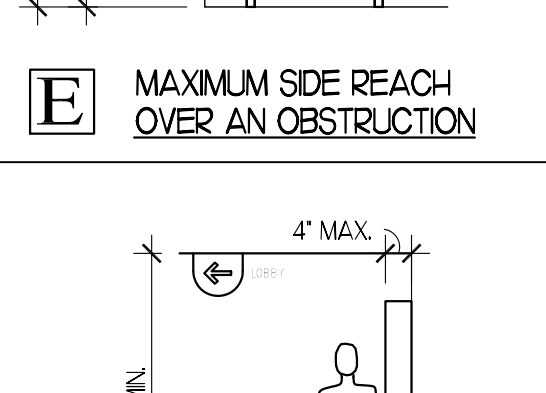
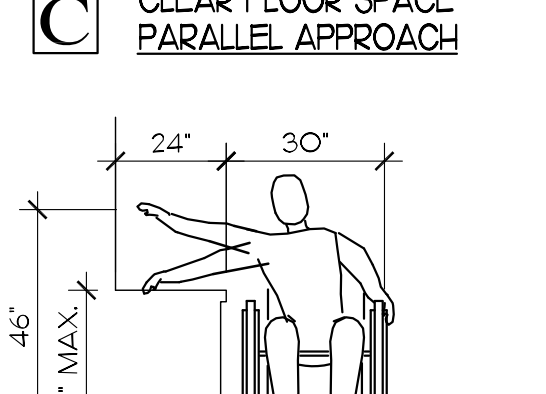
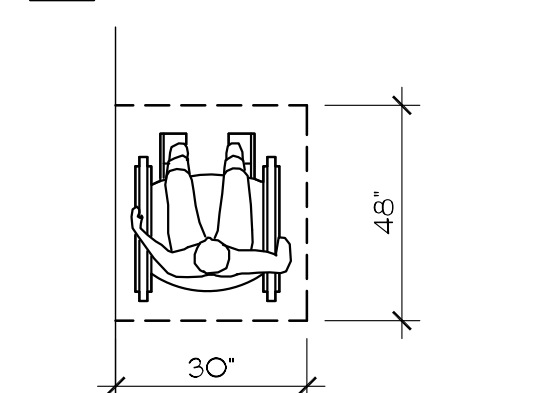
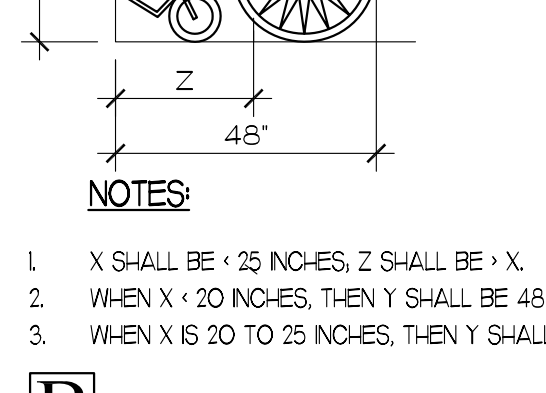
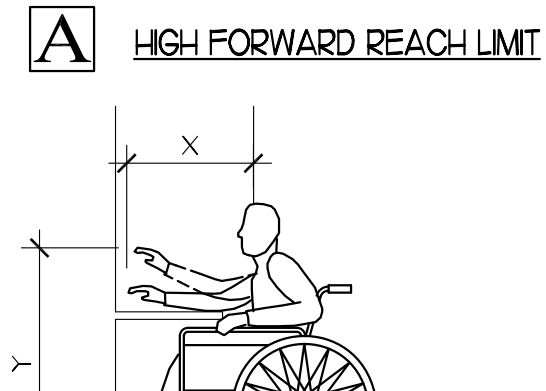
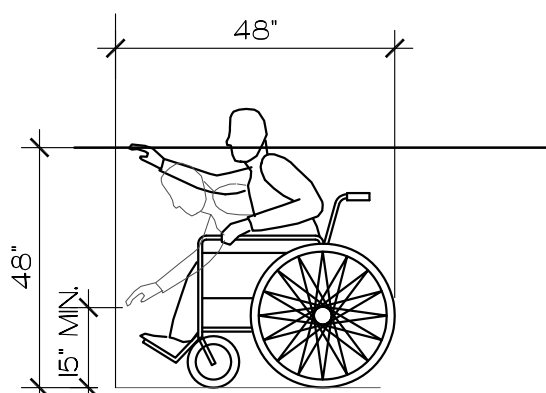


HANDRAIL

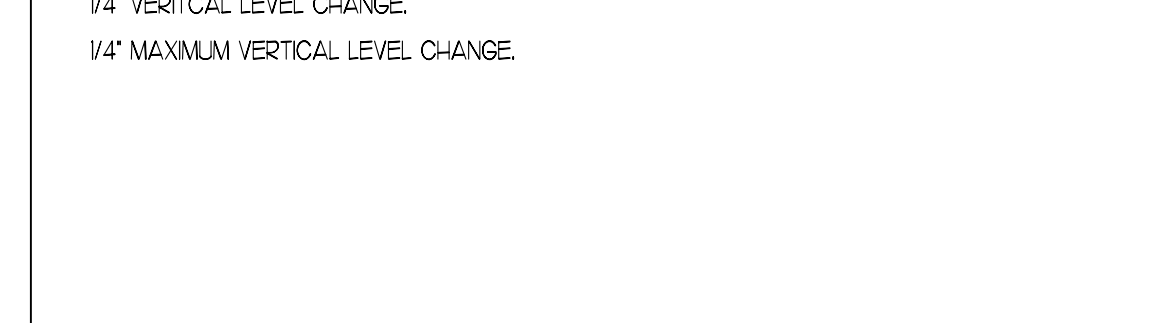
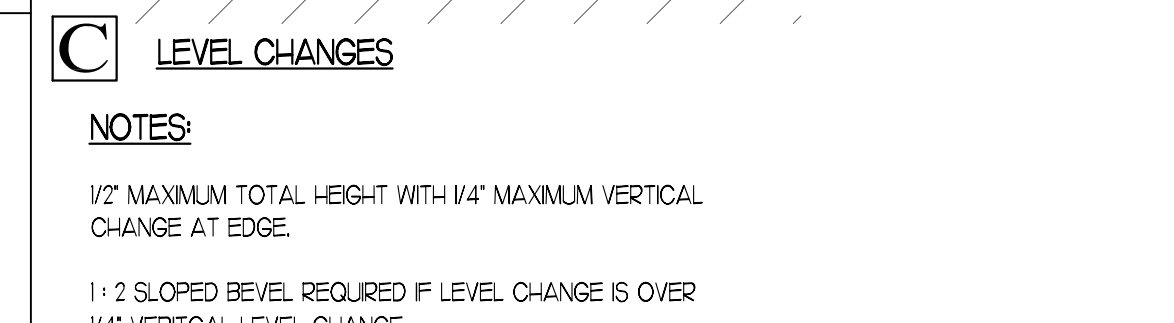
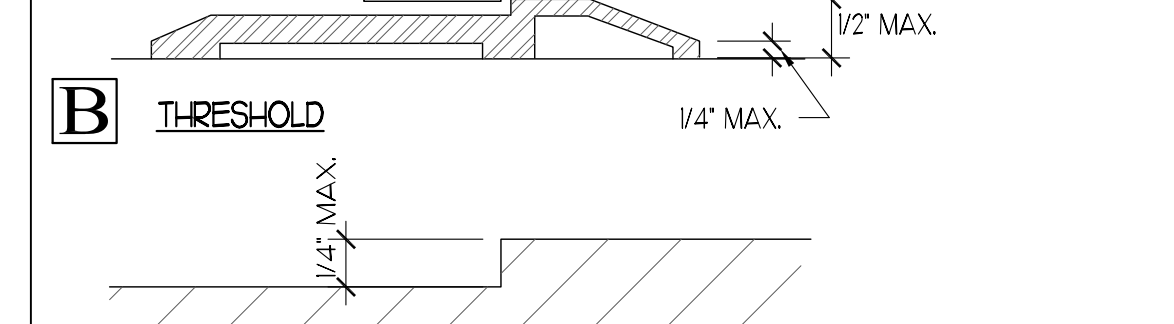
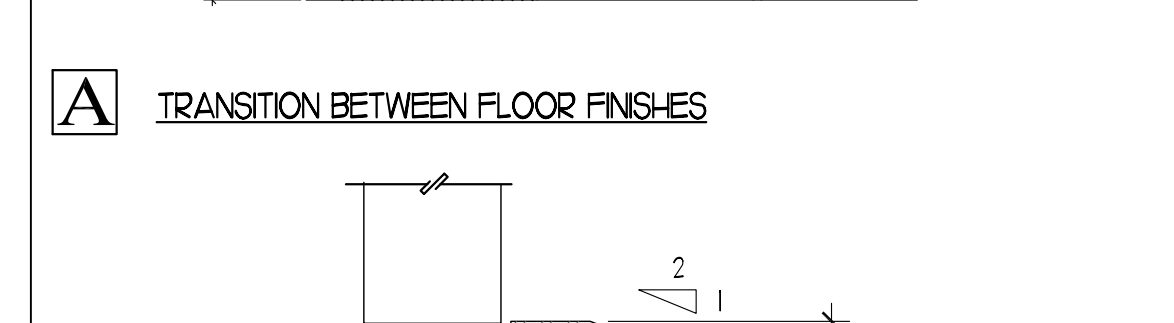
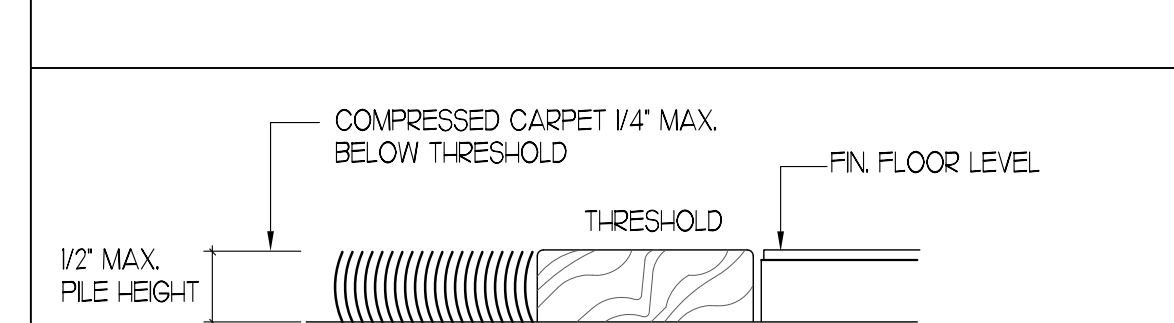
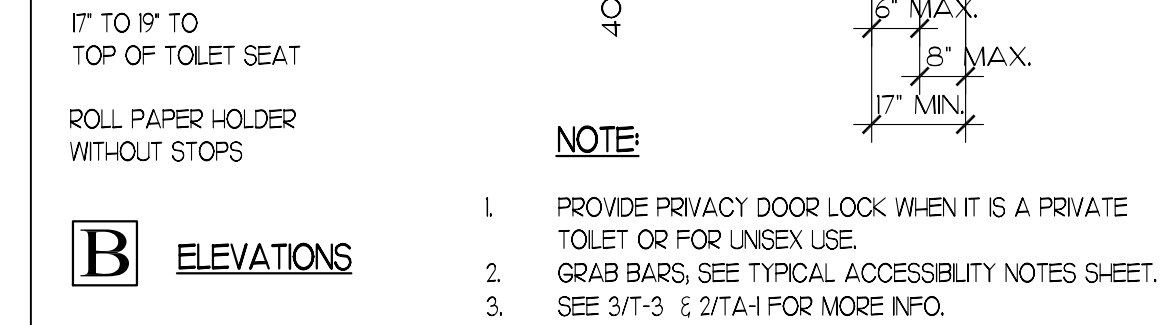
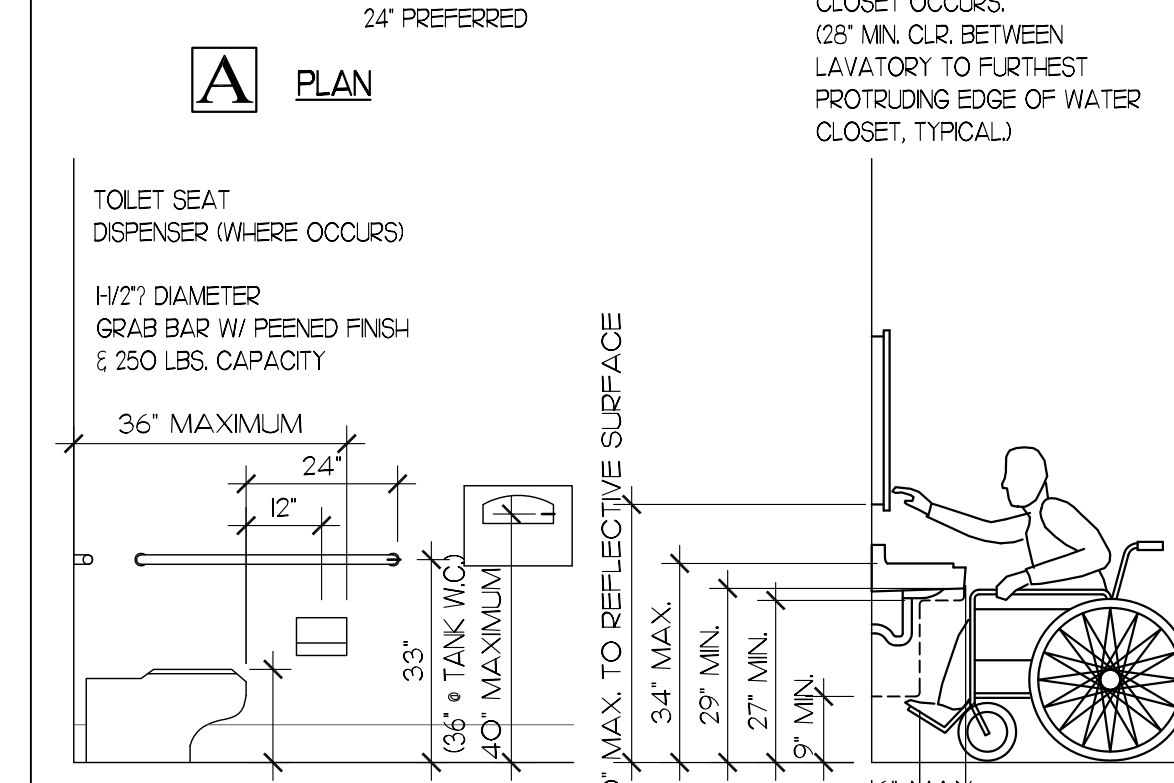
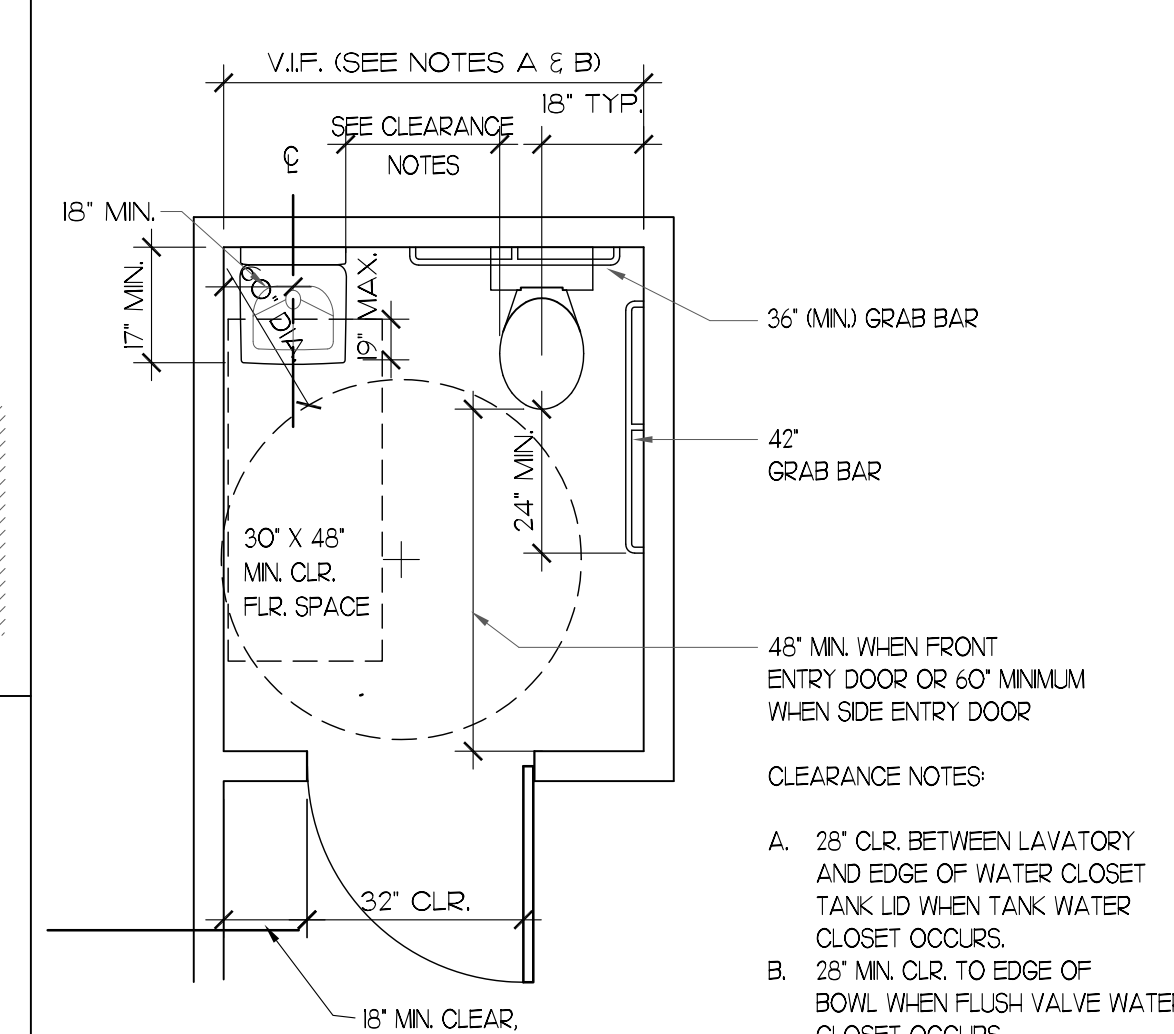


HANDRAIL

B HANDRAILS



A PROTRUDING OBJECTS



ENERGY SMART CONSTRUCTION DESIGNED BY: CHERIF AMOR



A REMODEL FOR ISLAMIC CENTER 2222 15th STREET LUBBOCK, TX 79401

Table with 2 columns: DATE, REVISIONS

APR 28, 2009

2009-603 PROJECT NUM. SHEET NUMBER TAS 1 OF 10

Do not reproduce without permission from Hunn Designs 12402 Slide Rd Suite 203, Lubbock, Texas 79424 (806) 791-6700

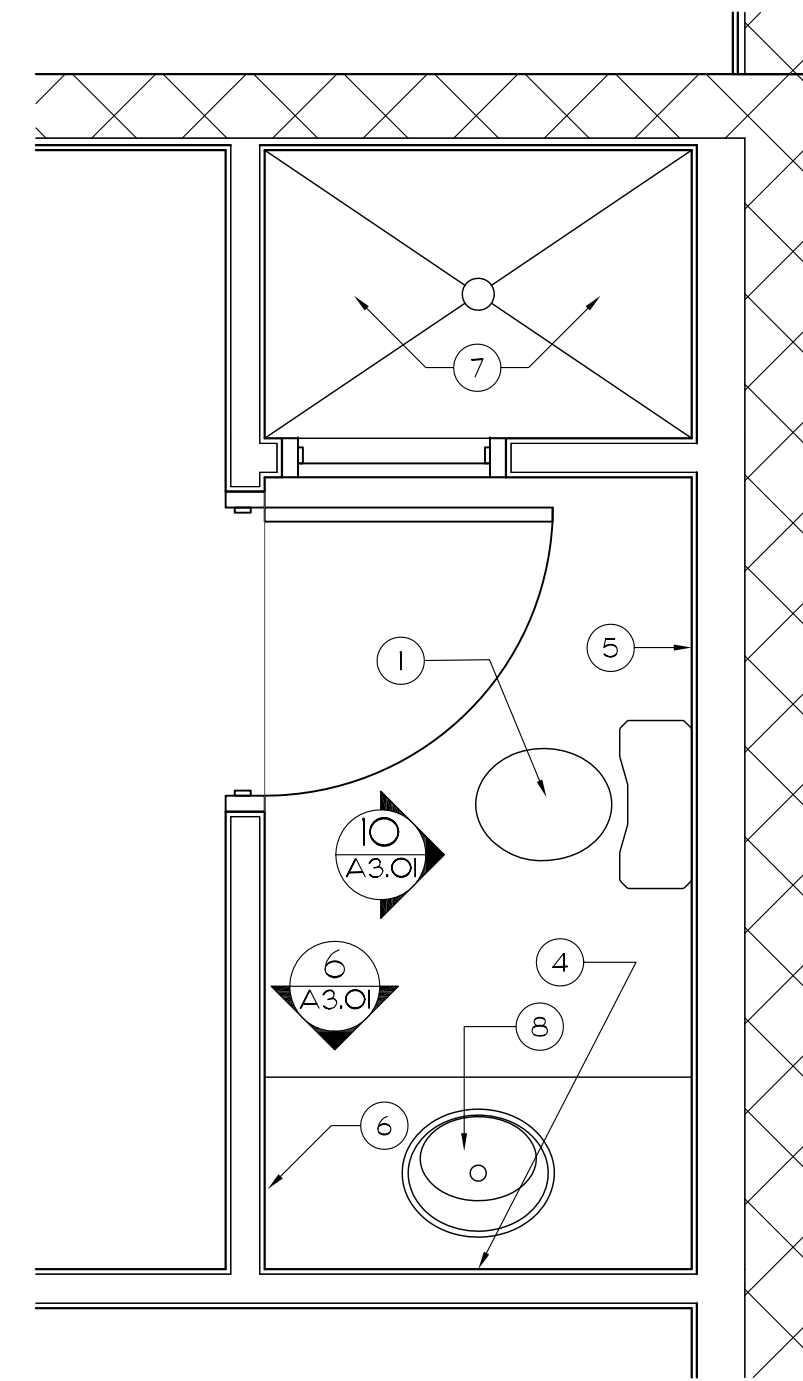
GENERAL NOTES

- 1 ALL PLUMBING FIXTURES AND ACCESSORIES SHALL MEET T&A AND ADA REQUIREMENTS
- 2 REF TO MP&E FOR ALL PLUMBING REQUIREMENTS

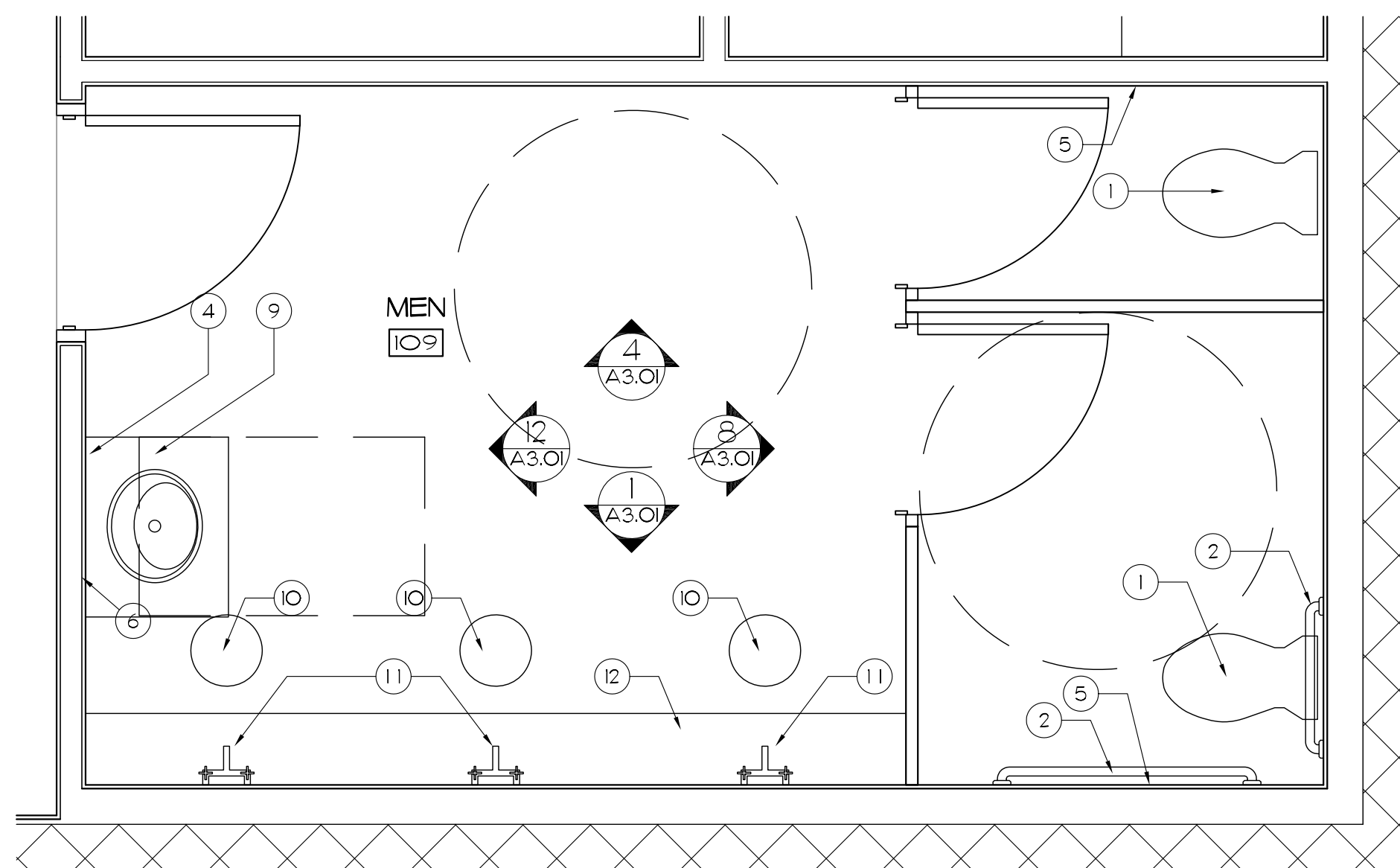
KEY NOTES

AS DENOTED BY: (H) →

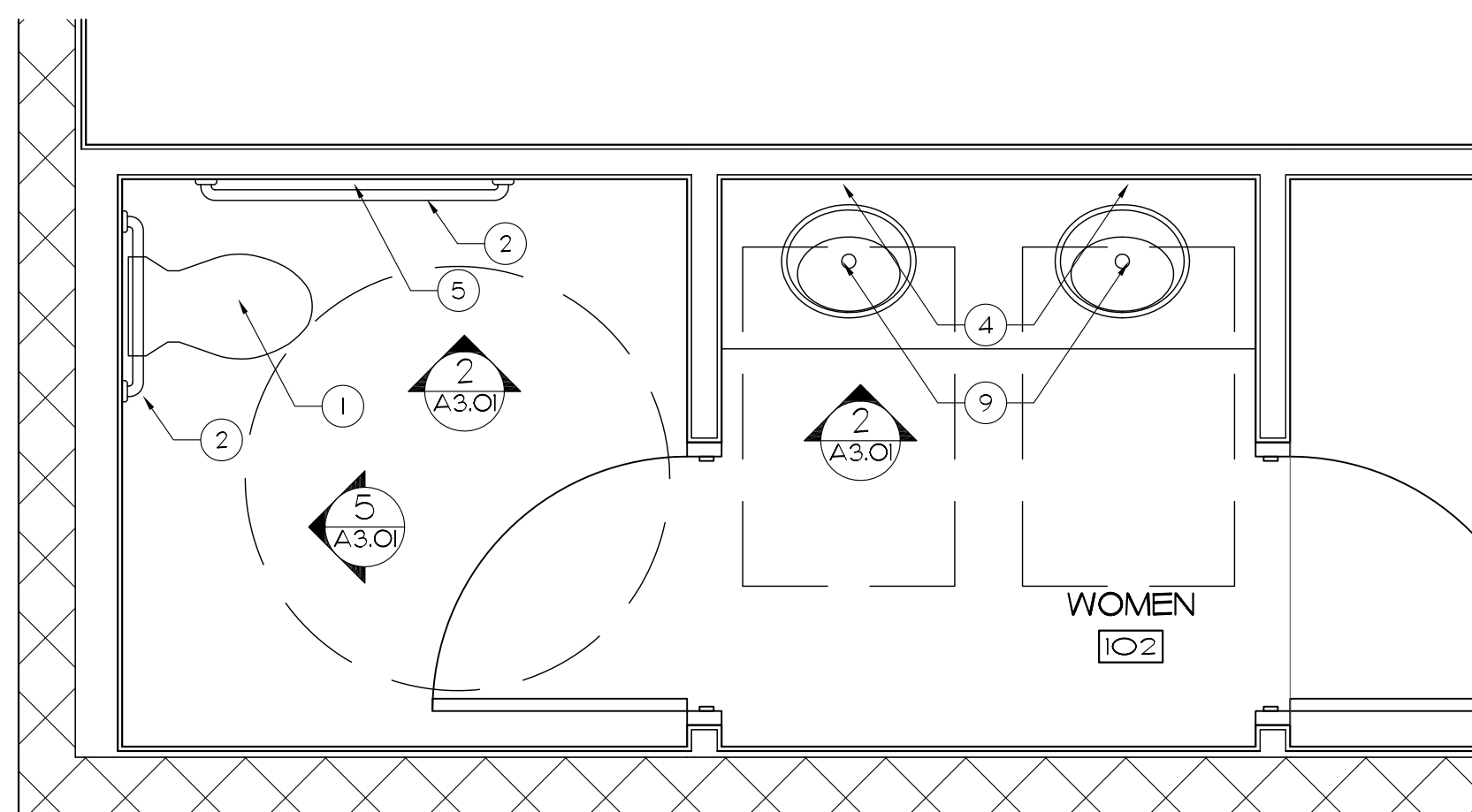
- 1 WATERCLOSET
- 2 GRAB BARS
- 3 WALL MOUNTED LAVATORY
- 4 MIRROR
- 5 TOILET PAPER HOLDER
- 6 PAPER TOWEL DISPENSER
- 7 SHOWER - RECESS FLOOR 4". INSTALL 2'-0" SHOWER DOOR
- 8 LAVATORY MOUNTED IN CABINET
- 9 LAVATORY MOUNTED IN ADA APPROVED TOP
- 10 FLOOR DRAINS WITH FLOOR BOWLS
- 11 WALL MOUNTED FAUCETS
- 12 BENCH SET AT 16" FOR SITTING



4 BATHROOM PLAN DETAIL
SCALE: 1/2"=1'-0"



3 BATHROOM PLAN DETAIL
SCALE: 1/2"=1'-0"



2 BATHROOM PLAN DETAIL
SCALE: 1/2"=1'-0"

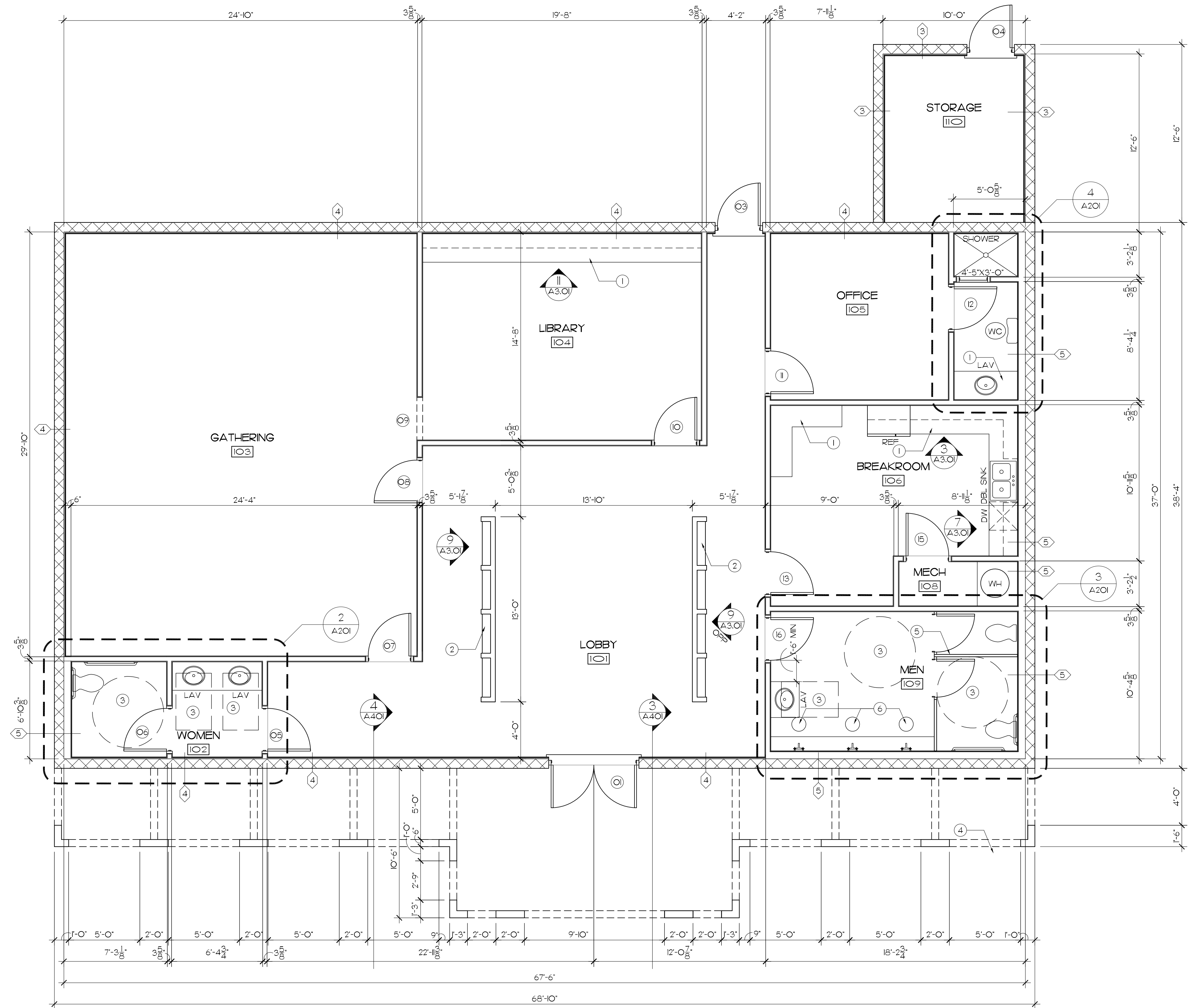
GENERAL NOTES

- 1 VERIFY ALL ALL UTILITY LINES PRIOR TO ANY DIGGING
- 2 VERIFY ALL DIMENSIONS WITH EXISTING CONDITIONS

FLOOR PLAN NOTES

AS DENOTED BY: (H) →

- 1 MILLWORK, REF TO A301 FOR DETAILS
- 2 BUILT-INS FOR SHOE STORAGE REF TO 9/A301 FOR DETAILS
- 3 ADA CLEARANCE
- 4 REF TO SITE PLAN FOR ADA RAMP
- 5 BATH-ROOM PARTITIONS
- 6 FLOOR DRAINS W/ BOWL SET IN TO CONCRETE. REF TO MECHANICAL FOR SPECIFICATIONS.



1 FLOOR PLAN
SCALE: 1/4"=1'-0"

ENERGY
SMART
CONSTRUCTION
DESIGNED BY:
CHERIF AMOR

hd
HUNN
DESIGNS
www.hunn designs.com

A REMODEL FOR
ISLAMIC CENTER
2222 15th STREET LUBBOCK, TX 79401

APR 28, 2009

DATE

REVISIONS

2009-603

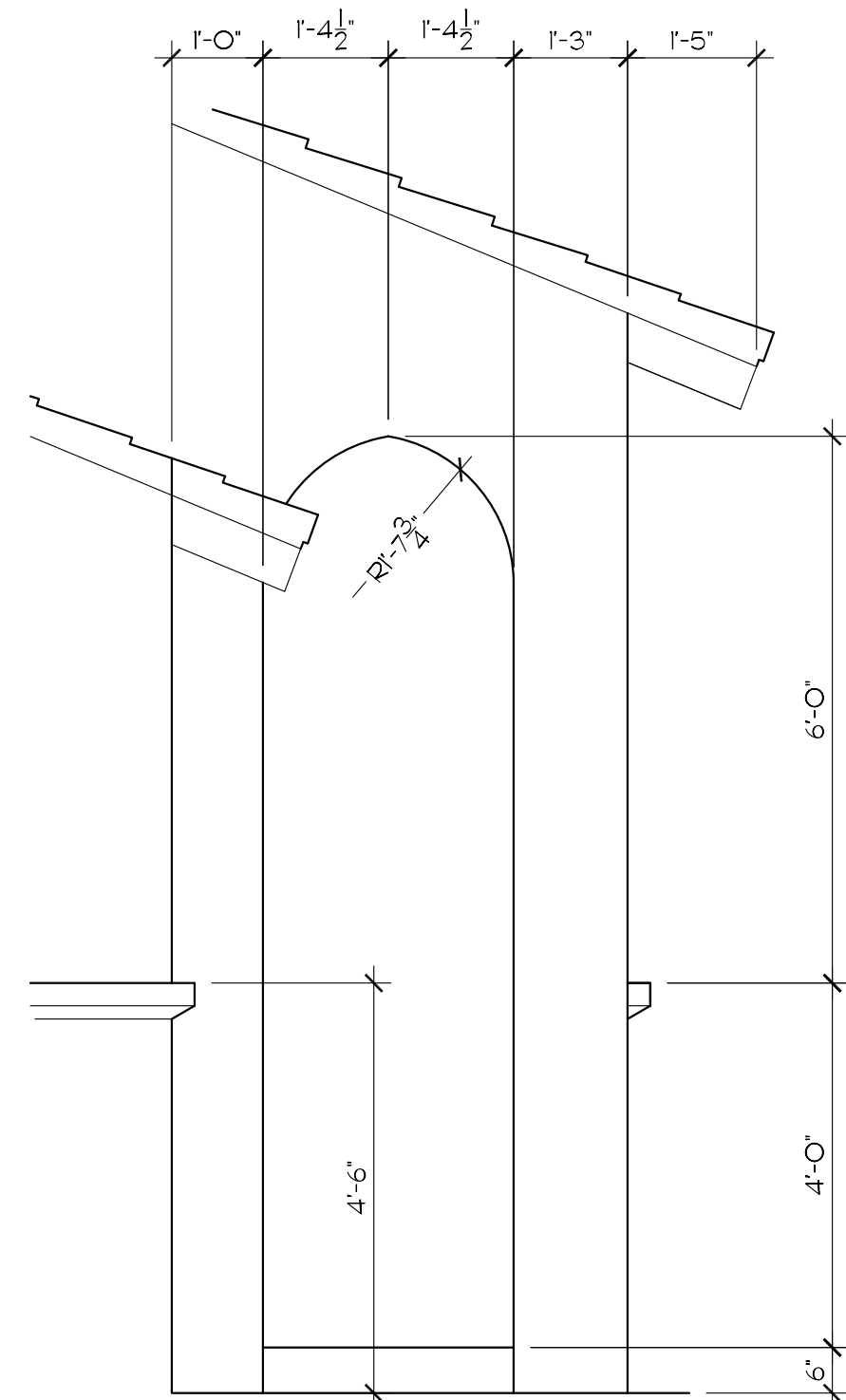
PROJECT NUM.

SHEET NUMBER

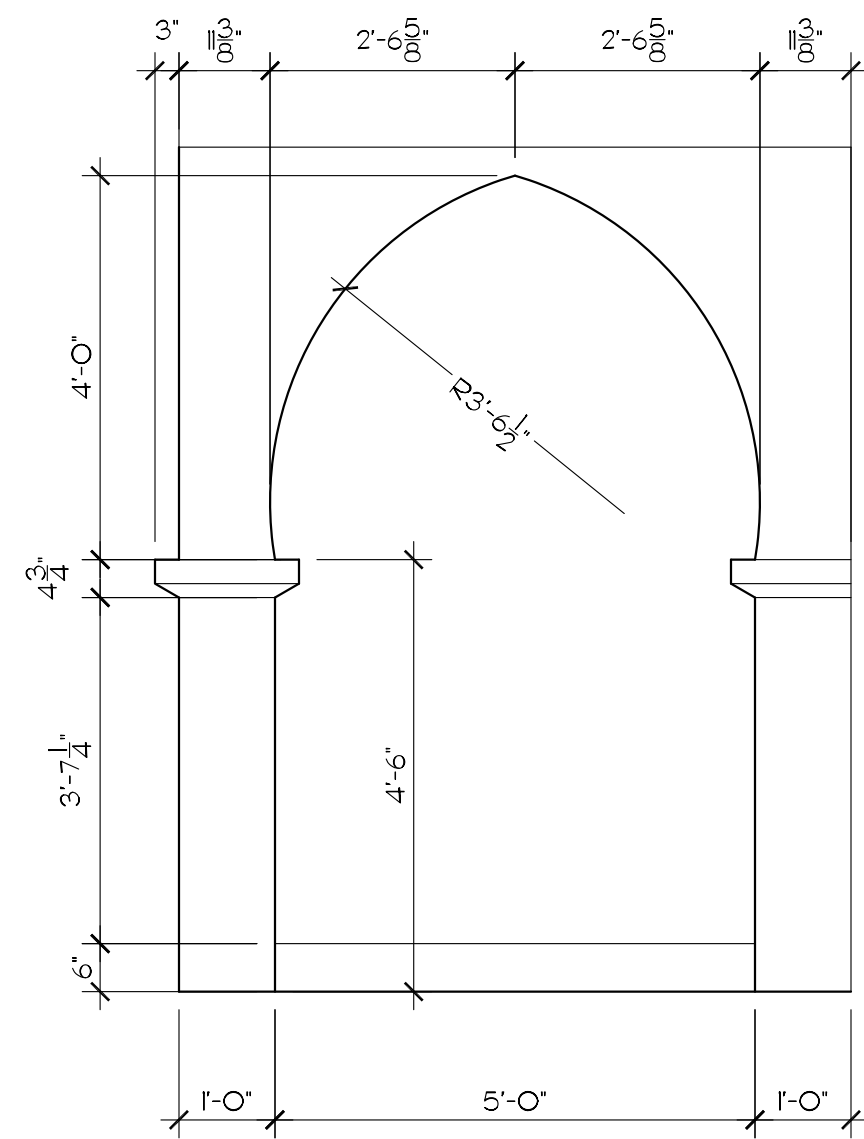
A201

3 OF 10

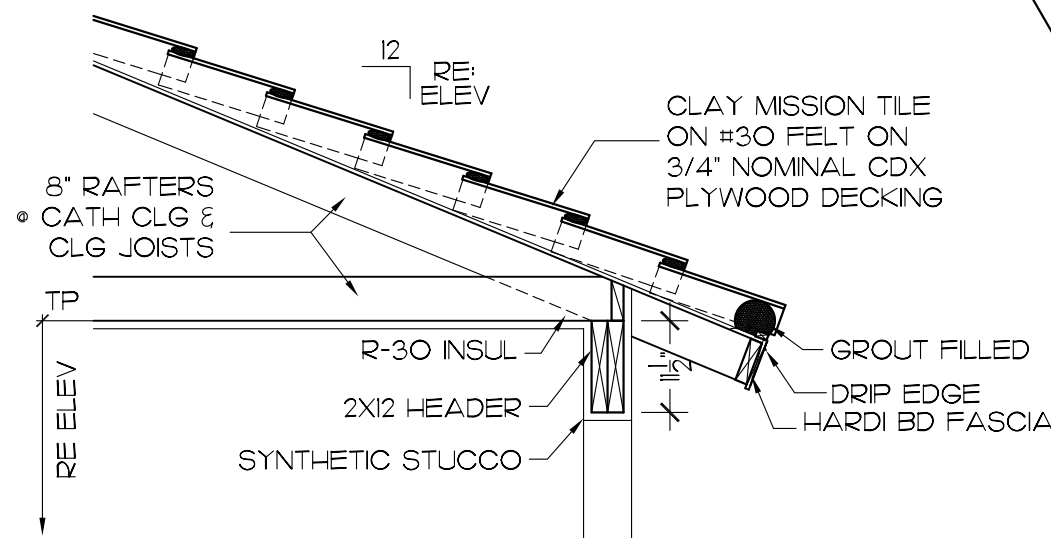
Do not reproduce without permission from Hunn Designs 12402 Slide Rd Suite 203, Lubbock, Texas 79424 (806) 794-6700



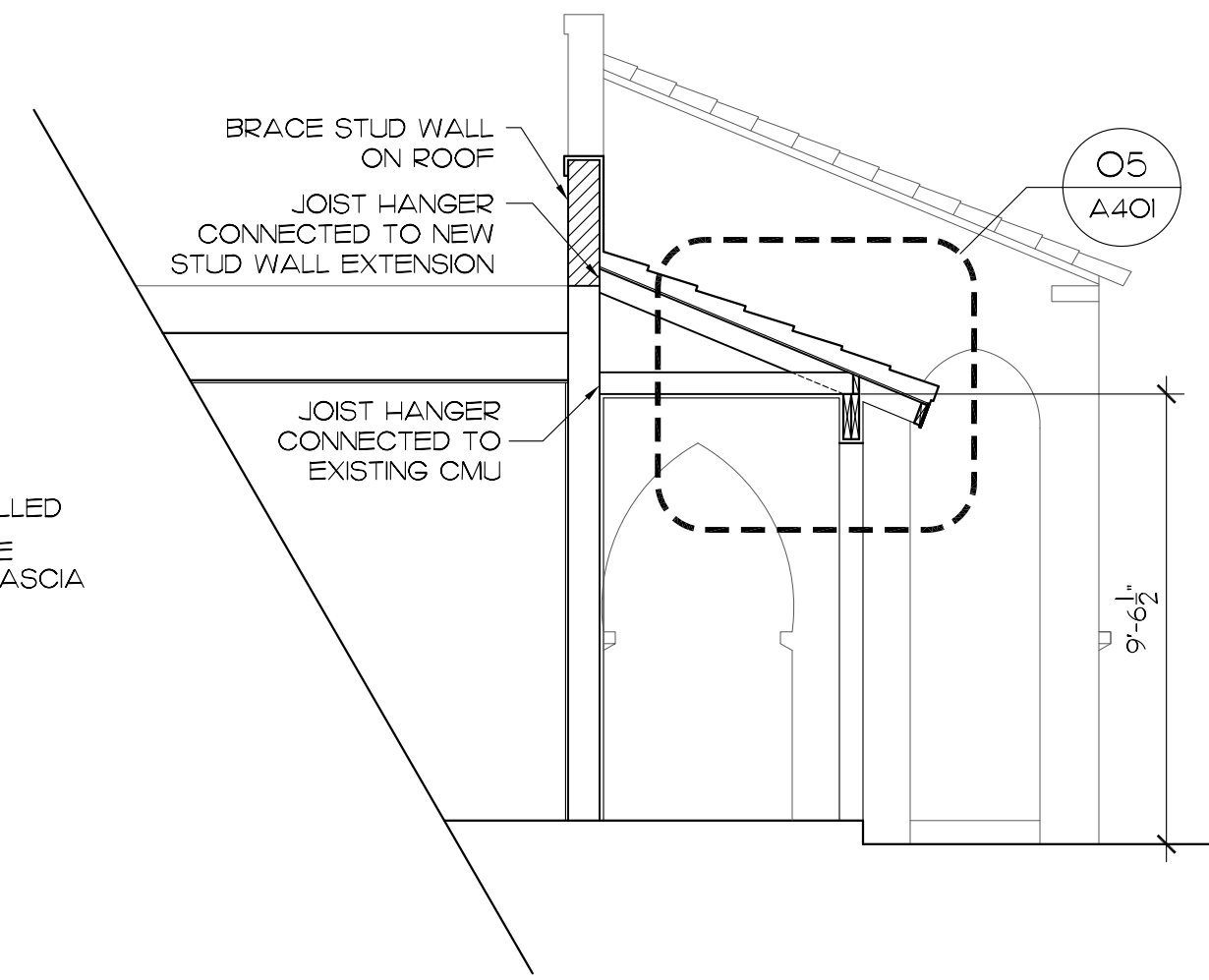
10 SIDE ARCHWAY DETAIL
SCALE: 1/2" = 1'-0"



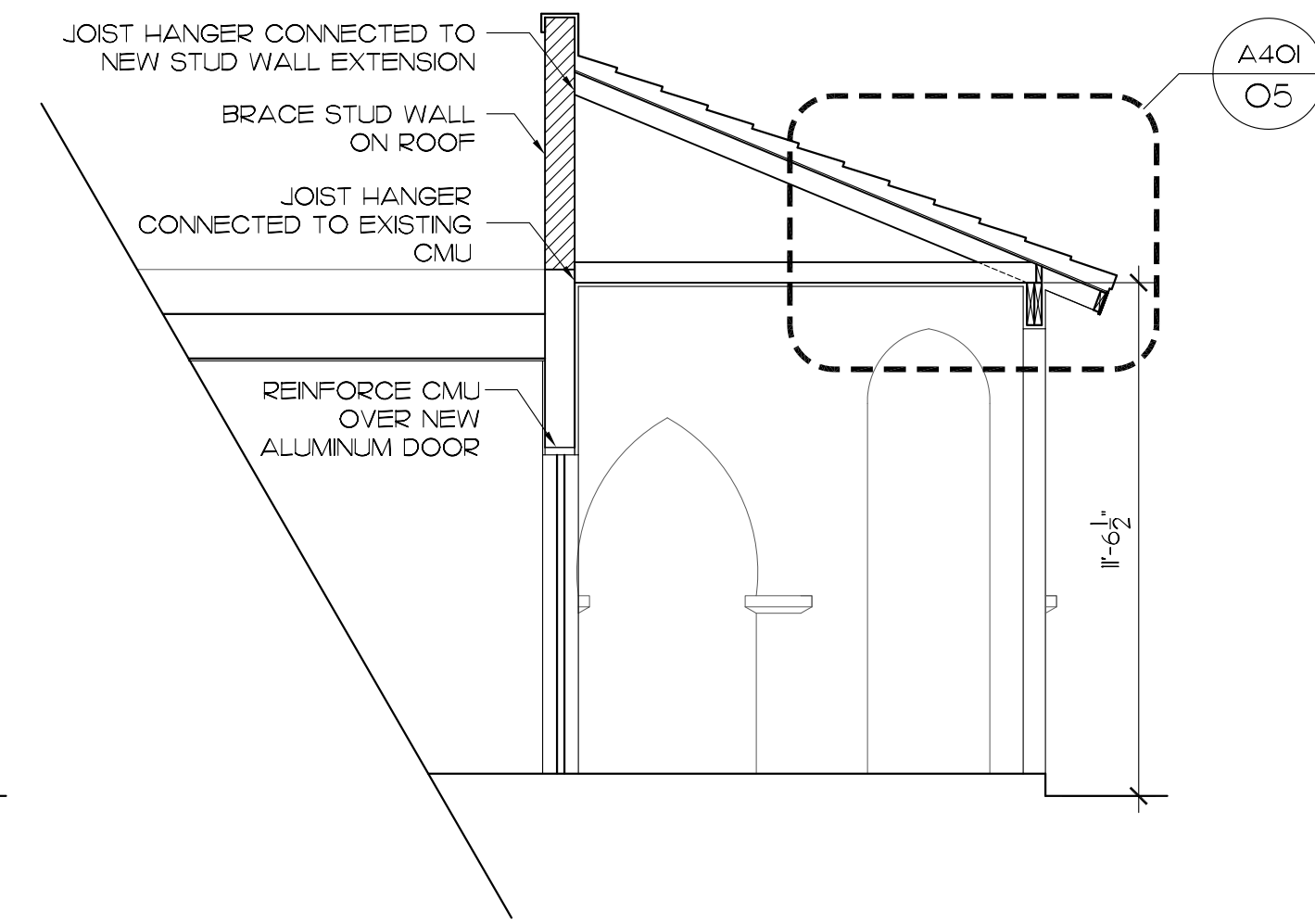
8 ARCHWAY DETAIL
SCALE: 1/2" = 1'-0"



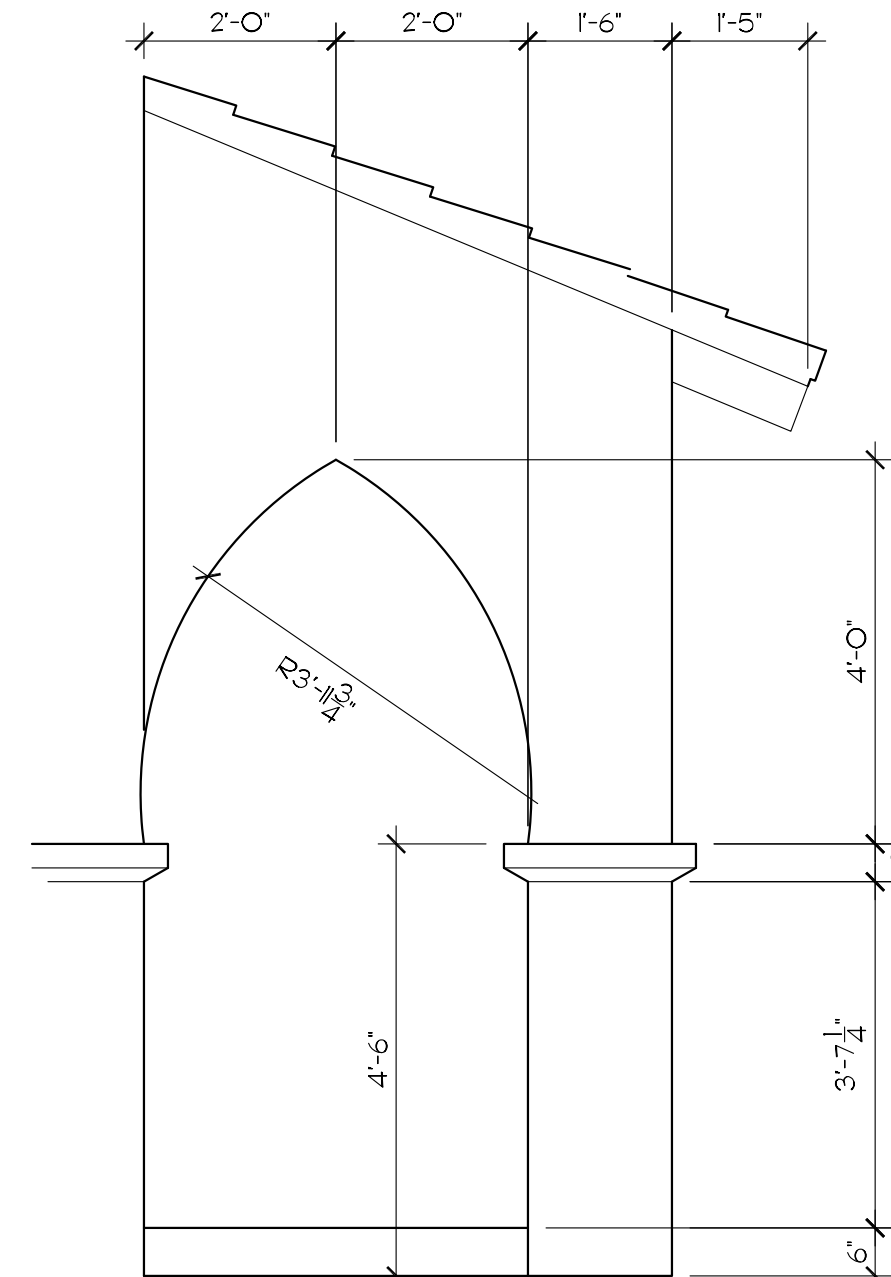
5 EAVE DETAIL
SCALE: 1/2" = 1'-0"



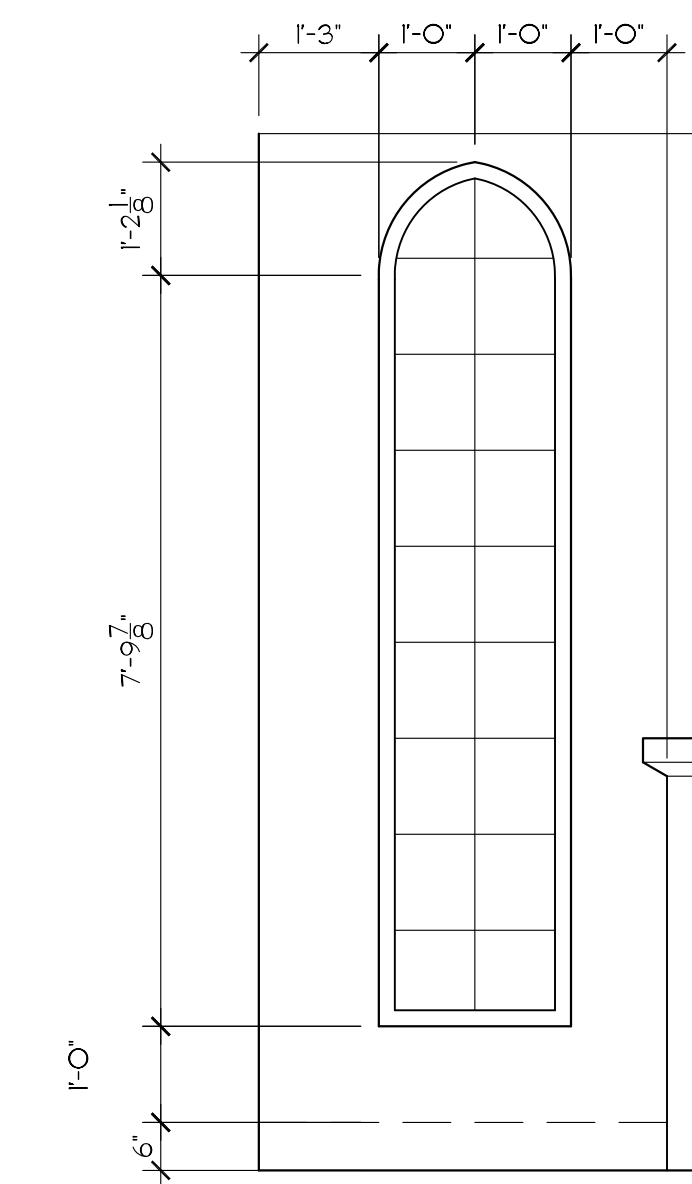
4 LOGGIA SECTION
SCALE: 1/4" = 1'-0"



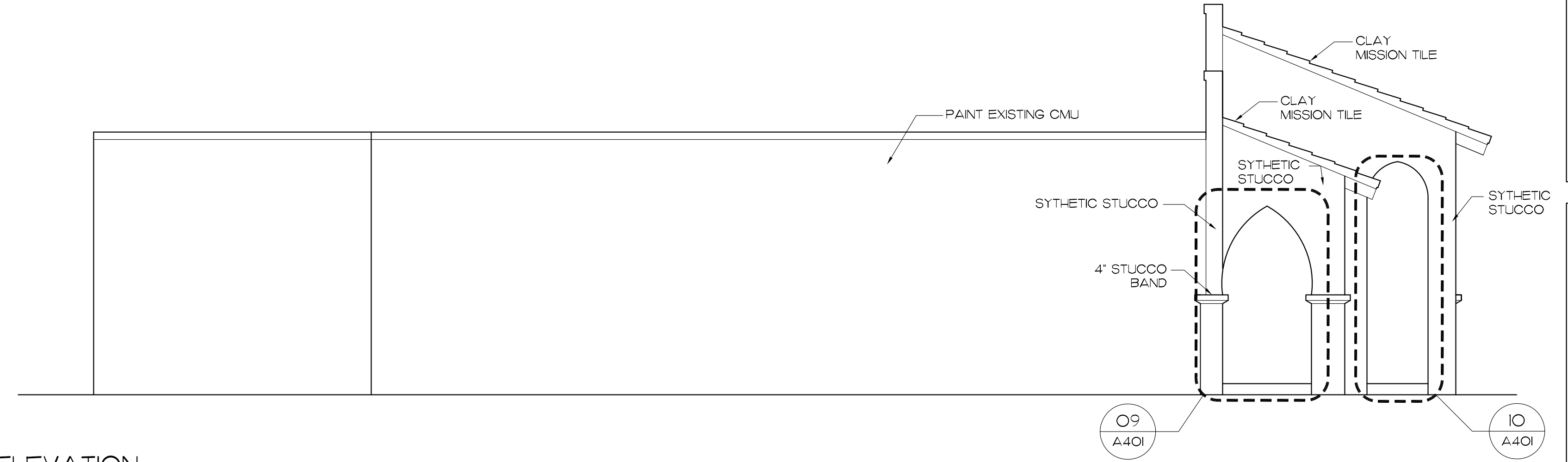
3 ENTRY SECTION
SCALE: 1/4" = 1'-0"



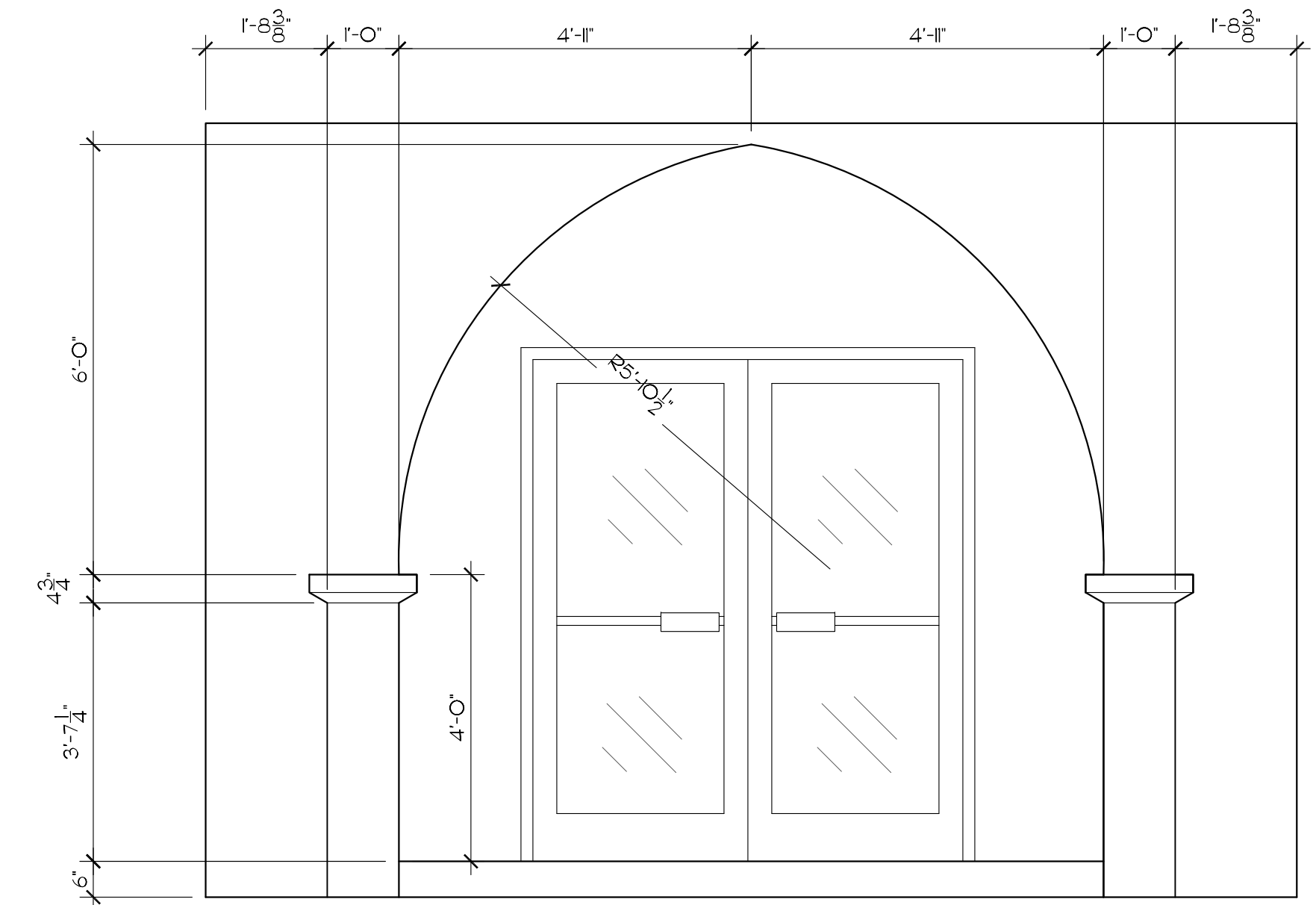
9 SIDE ARCHWAY DETAIL
SCALE: 1/2" = 1'-0"



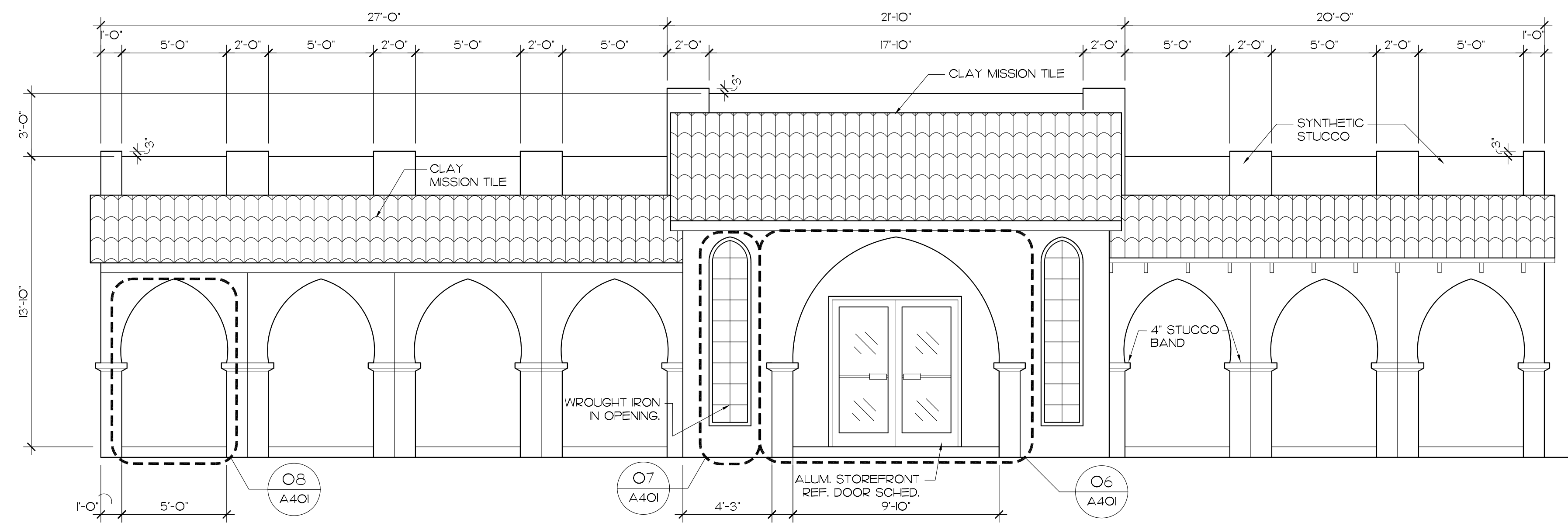
7 ENTRANCE WINDOW DETAIL
SCALE: 1/2" = 1'-0"



2 SIDE ELEVATION
SCALE: 1/4" = 1'-0"



6 MAIN ENTRANCE DETAIL
SCALE: 1/2" = 1'-0"



1 FRONT ELEVATION
SCALE: 1/4" = 1'-0"

ENERGY
SMART
CONSTRUCTION
DESIGNED BY:
CHERIF AMOR

hd
HUNN
DESIGNS
www.hunn designs.com

A REMODEL FOR
ISLAMIC CENTER
2222 15th STREET LUBBOCK, TX 79401

APR 28, 2009

DATE

REVISIONS

2009-603

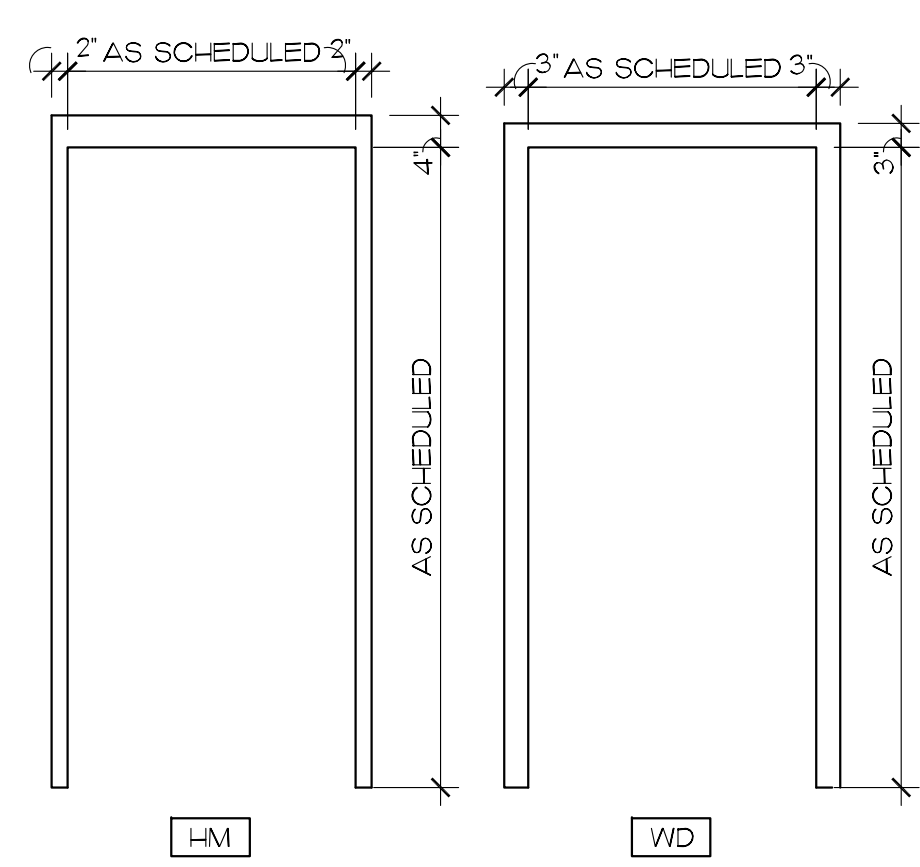
PROJECT NUM.

SHEET NUMBER

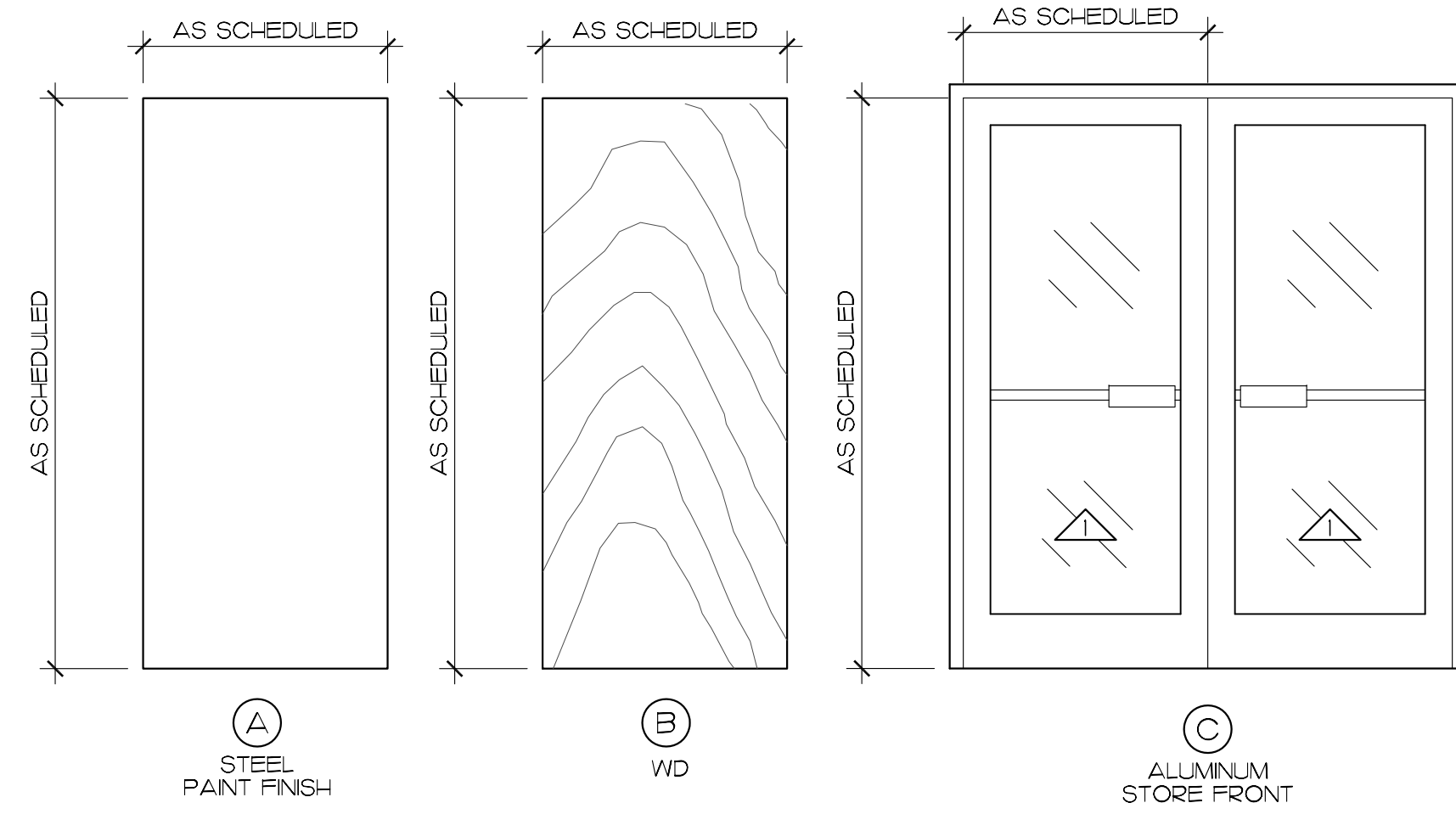
A401

5 OF 10

Do not reproduce without permission from Hunn Designs 12402 Slide Rd Suite 203, Lubbock, Texas 79424 (806) 794-6700



FRAME TYPES
SCALE: NTS



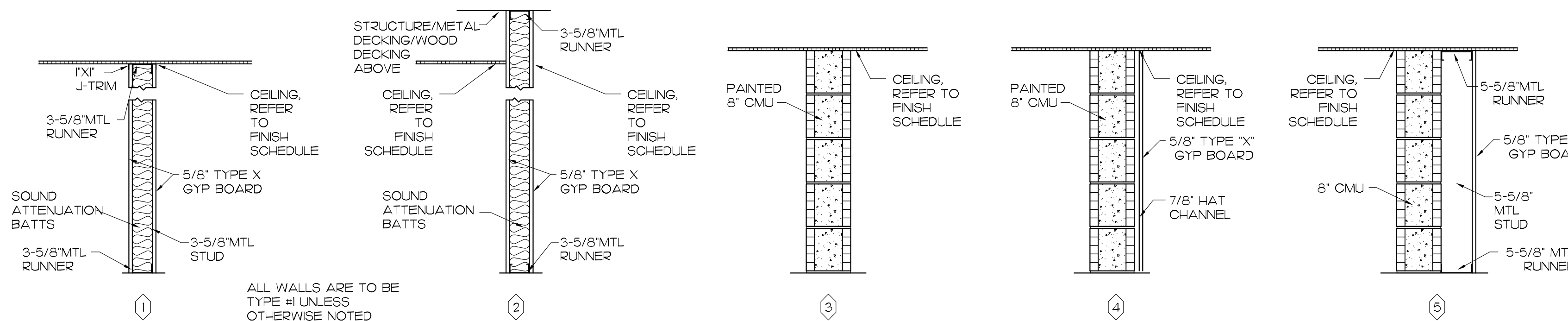
DOOR TYPES
SCALE: NTS

ABBREVIATIONS
 SUSP - SUSPENDED CEILING
 RB - 4\"/>

REMARKS:
 #1-ALUMINUM STOREFRONT
 3070 GLASS & ALUM. DOOR
 IN ALUM. FRAME, 1/4\"/>

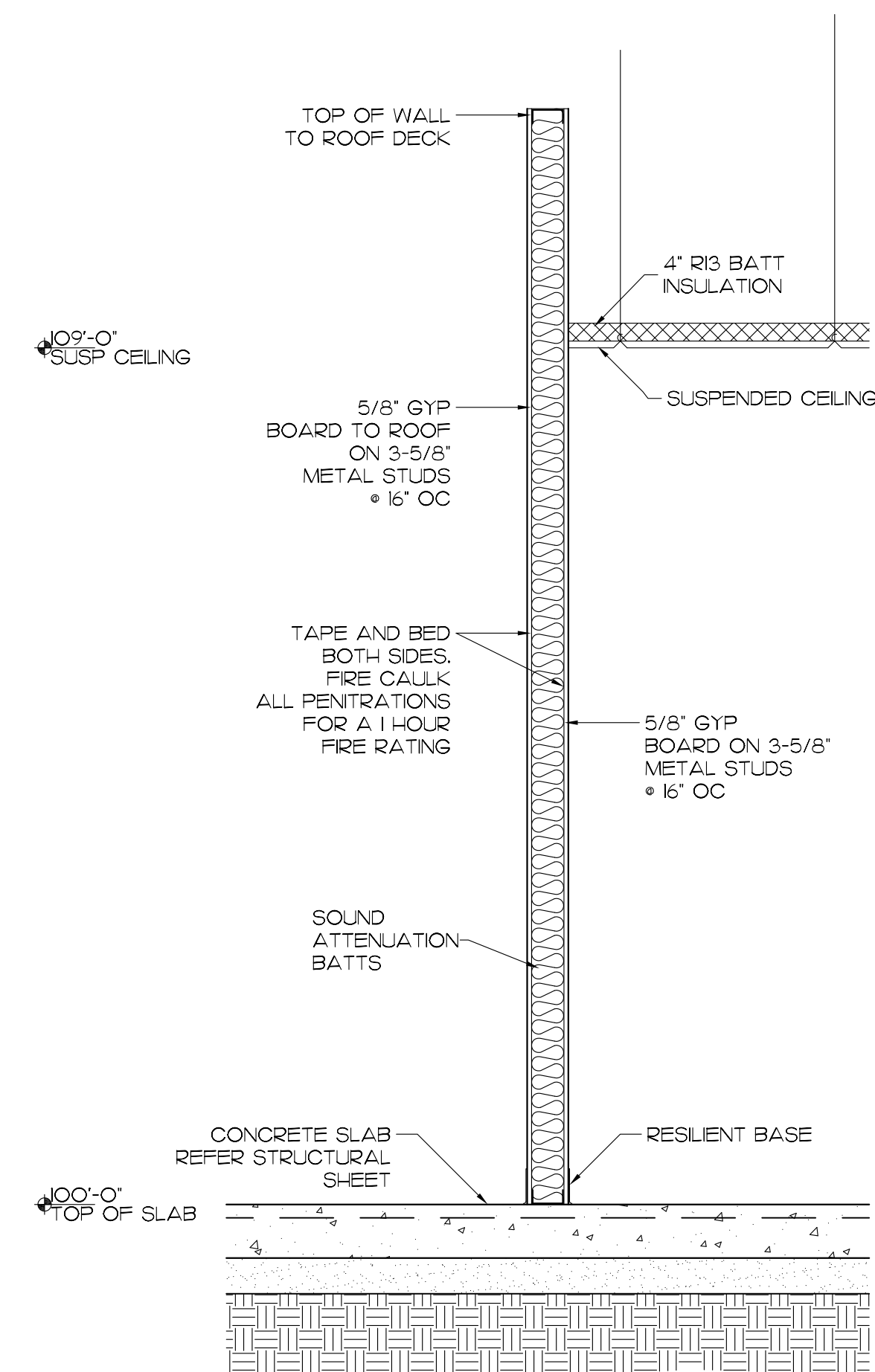
GLAZING IS (TEMPERED)
 INSULATING GLASS WITH
 RUBBER SEAL GASKET
 (CONSULT OWNER FOR
 OPTION ON LOW-E COATING)

DOOR SCHEDULE													RATING	REMARKS
DOOR			FRAME											
MARK	SIZE	DOOR	MATER.	FINISH	FRAME	MATER.	FINISH	HEAD	JAMB	SILL				
1	PR 3'-0\"/>													

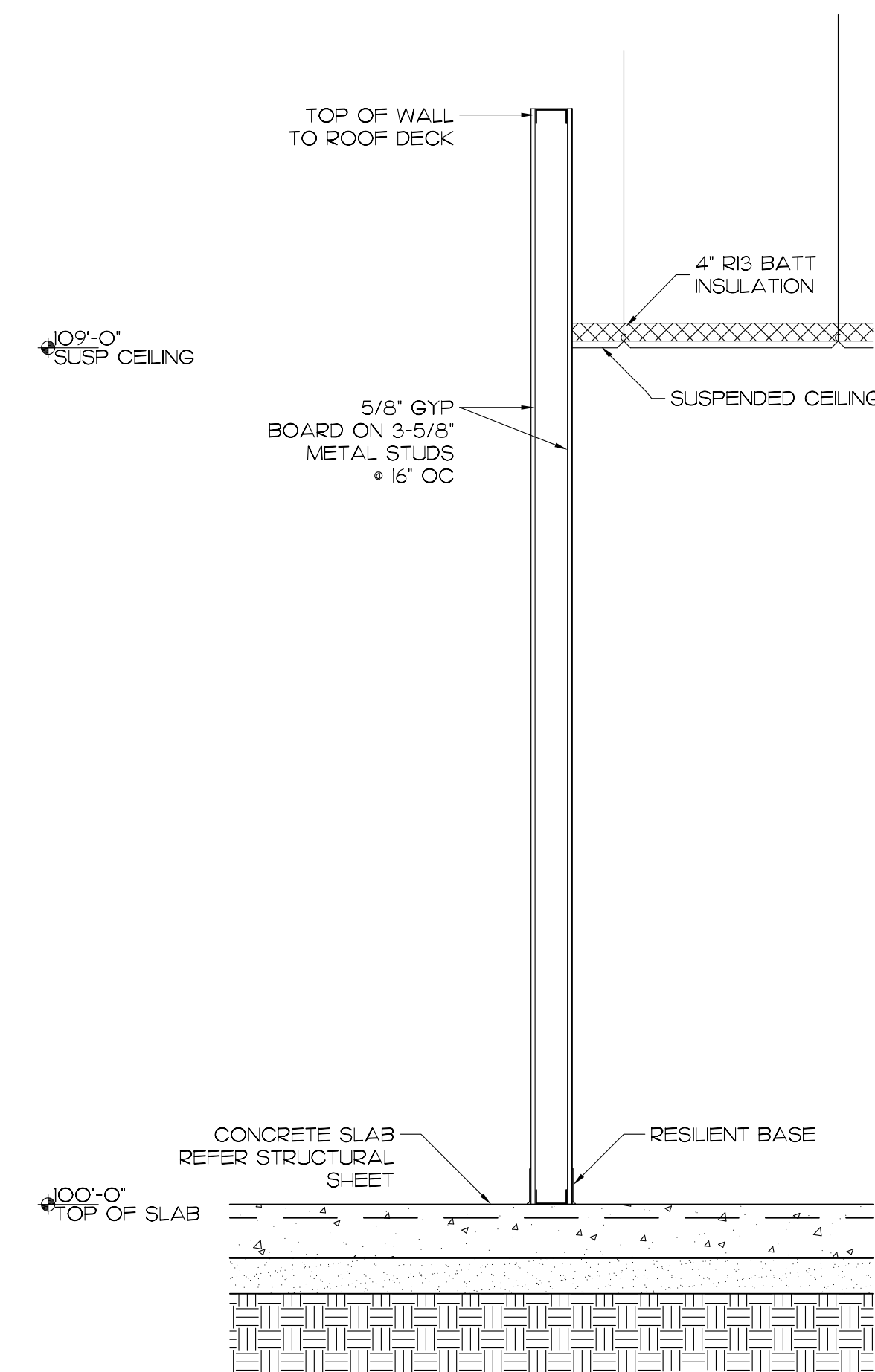


WALL TYPES
SCALE: NTS

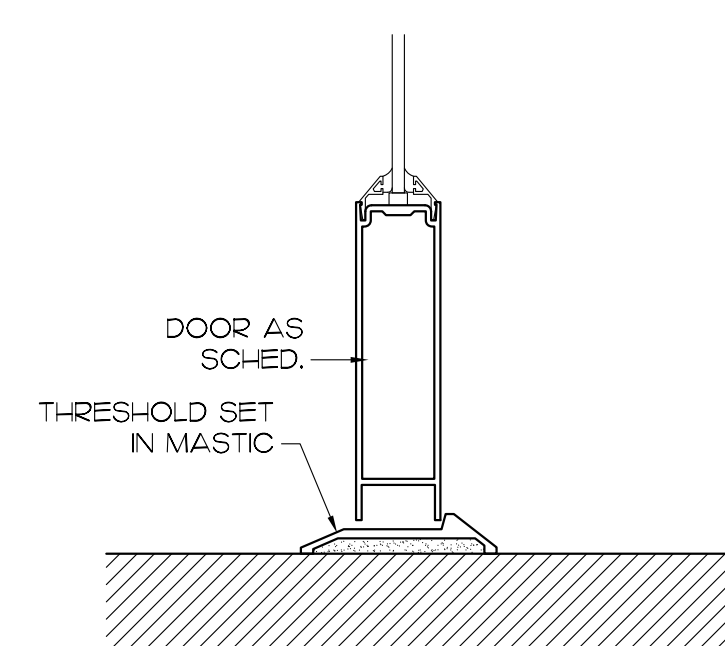
NUMBER	NAME	FLOOR		BASE		WALLS				CEILING		REMARKS		
		MATER	FINISH	MATER	FINISH	NORTH	EAST	SOUTH	WEST	HIGHT	MATER		FINISH	
101	LOBBY	CONCRETE	TILE	RB	-	GYP	TBT&P	GYP	TBT&P	GYP	TBT&P	GYP	TBT&P	9'-0\"/>



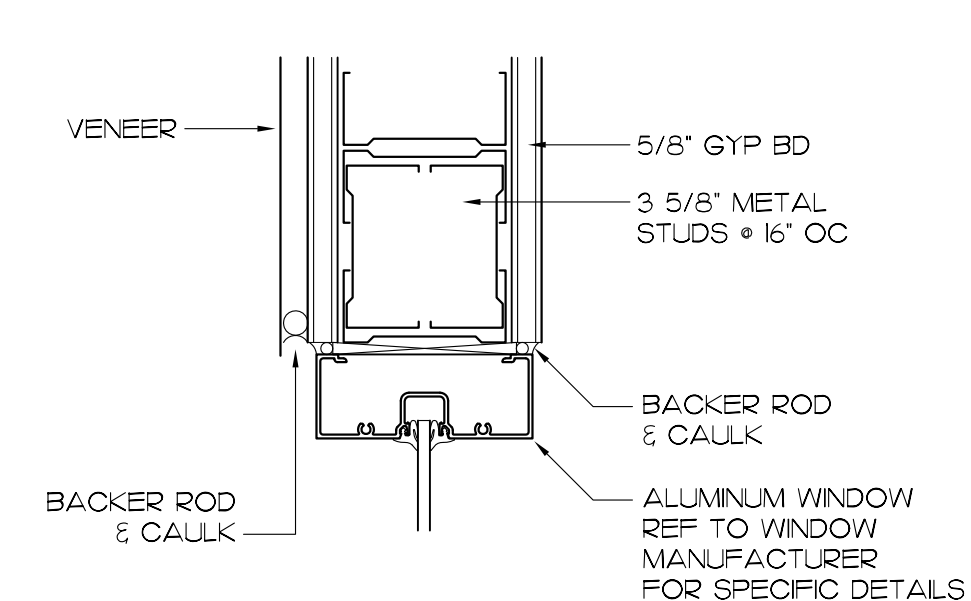
9 WALL SECTION
SCALE: 3/4\"/>



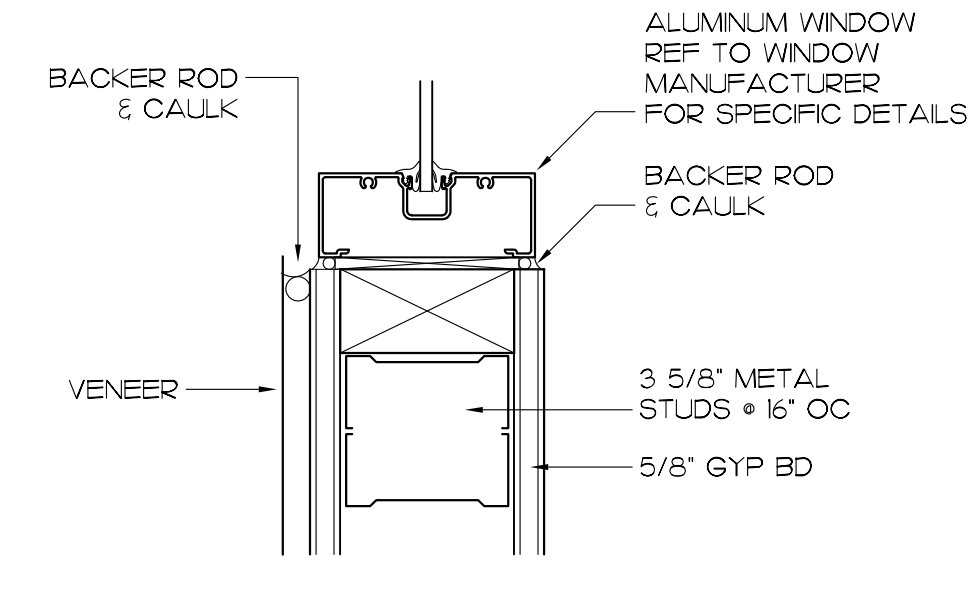
8 WALL SECTION
SCALE: 3/4\"/>



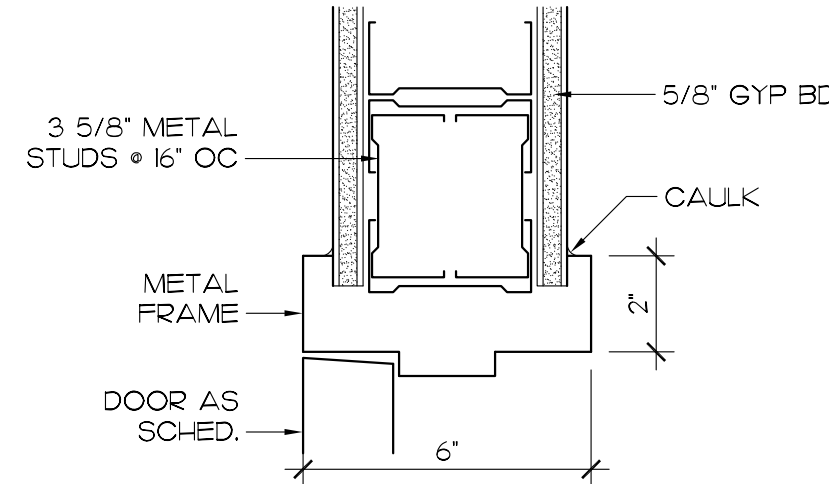
7 TYP. THRESHOLD
SCALE: 3/4\"/>



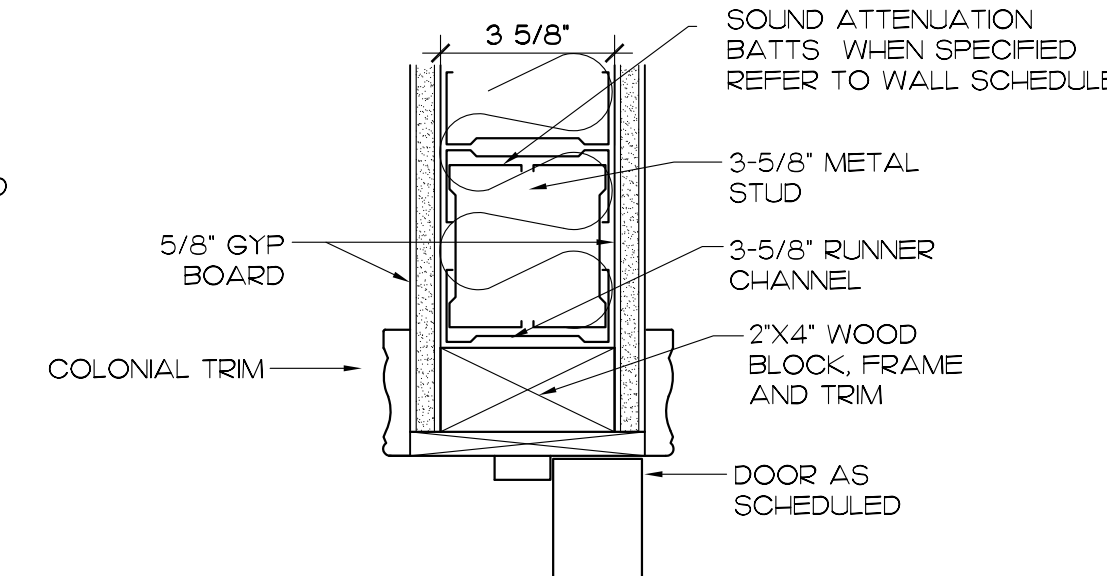
6 HEAD DETAIL
SCALE: 3/4\"/>



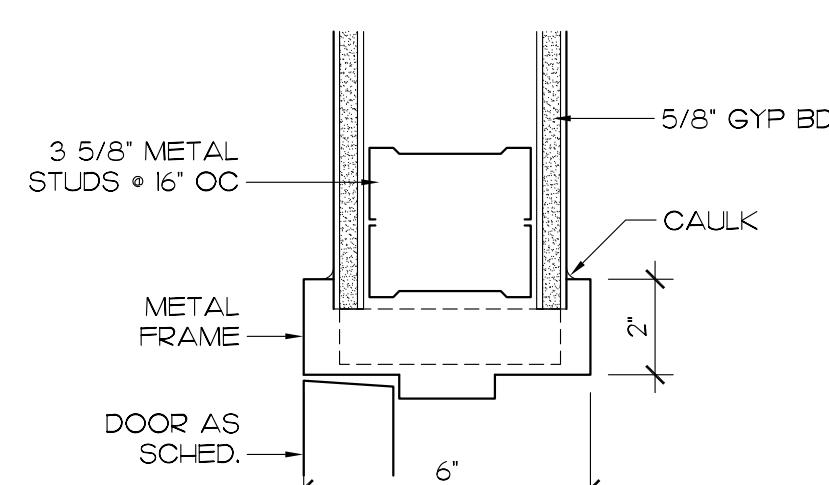
3 JAMB DETAIL
SCALE: 3/4\"/>



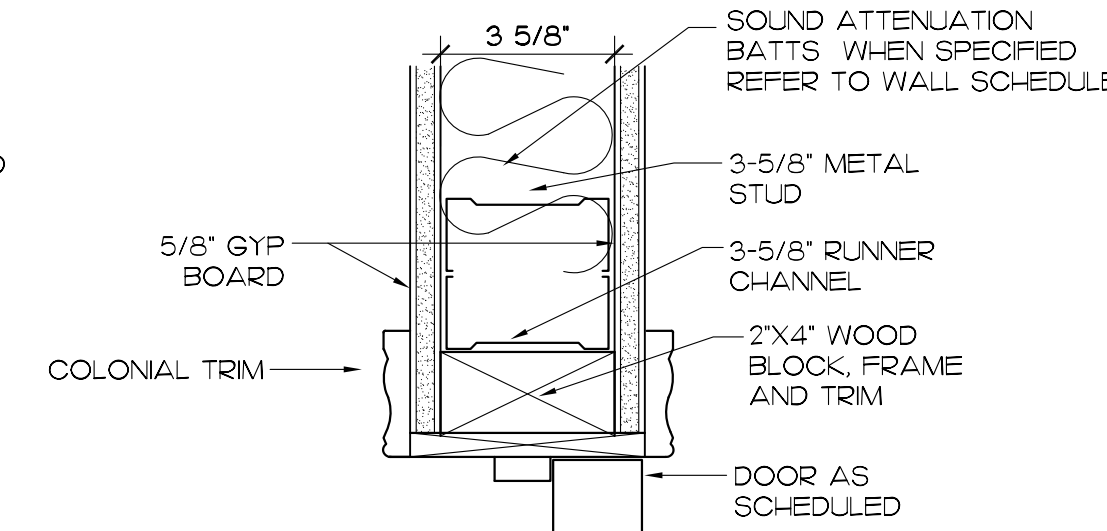
5 HEAD DETAIL
SCALE: 3/4\"/>



2 HEAD DETAIL
SCALE: 3/4\"/>



4 JAMB DETAIL
SCALE: 3/4\"/>



1 JAMB DETAIL
SCALE: 3/4\"/>

ENERGY
SMART
CONSTRUCTION
DESIGNED BY:
CHERIF AMOR

hd
HUNN
DESIGNS
www.hunn designs.com

A REMODEL FOR
ISLAMIC CENTER
2222 15th STREET LUBBOCK, TX 79401

APR 28, 2009
DATE
REVISIONS

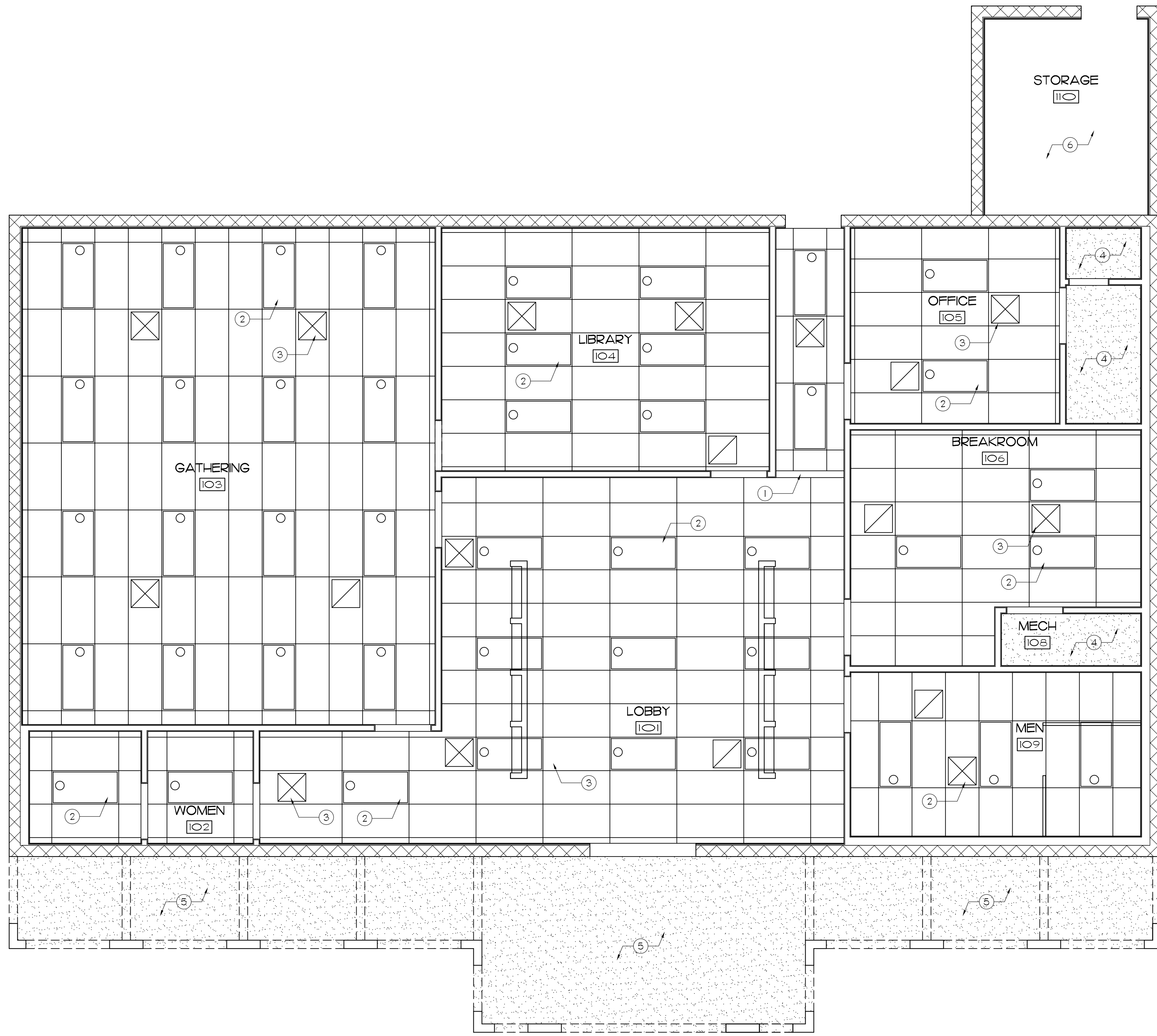
2009-603
PROJECT NUM.
SHEET NUMBER
A501
6 OF 10

Do not reproduce without permission from Hunn Designs 12402 Slide Rd Suite 203, Lubbock, Texas 79424 (806) 794-6700

REFLECTED CEILING SYMBOLS

	HVAC SUPPLY REGISTRAR
	HVAC RETURN REGISTRAR
	FLOURESCENT LIGHT
	2X4 ACOUSTIC CEILING GRID
	TEXTURED GYP CEILING OR SYNTHETIC STUCCO REFER TO KEY NOTES FOR LOCATIONS OF EACH

- GENERAL NOTES**
- 1 VERIFY ALL ALL UTILITY LINES PRIOR TO ANY DIGGING
 - 2 VERIFY ALL DIMENSIONS WITH EXISTING CONDITIONS
- CEILING PLAN NOTES**
AS DENOTED BY: (6)
- 1 HEADER FOR CEILING BREAK
 - 2 FLOURESCENT LIGHT TYPICAL, REF TO A701 FOR ELECTRICAL PLAN
 - 3 MECHANICAL DUCT TYPICAL, REF TO A501 FOR MECHANICAL PLAN
 - 4 TEXTURED GYP CEILING
 - 5 SYNTHETIC STUCCO
 - 6 EXPOSED CEILING



ENERGY
SMART
CONSTRUCTION
DESIGNED BY:
CHERIF AMOR



A REMODEL FOR
ISLAMIC CENTER
2222 15th STREET LUBBOCK, TX 79401

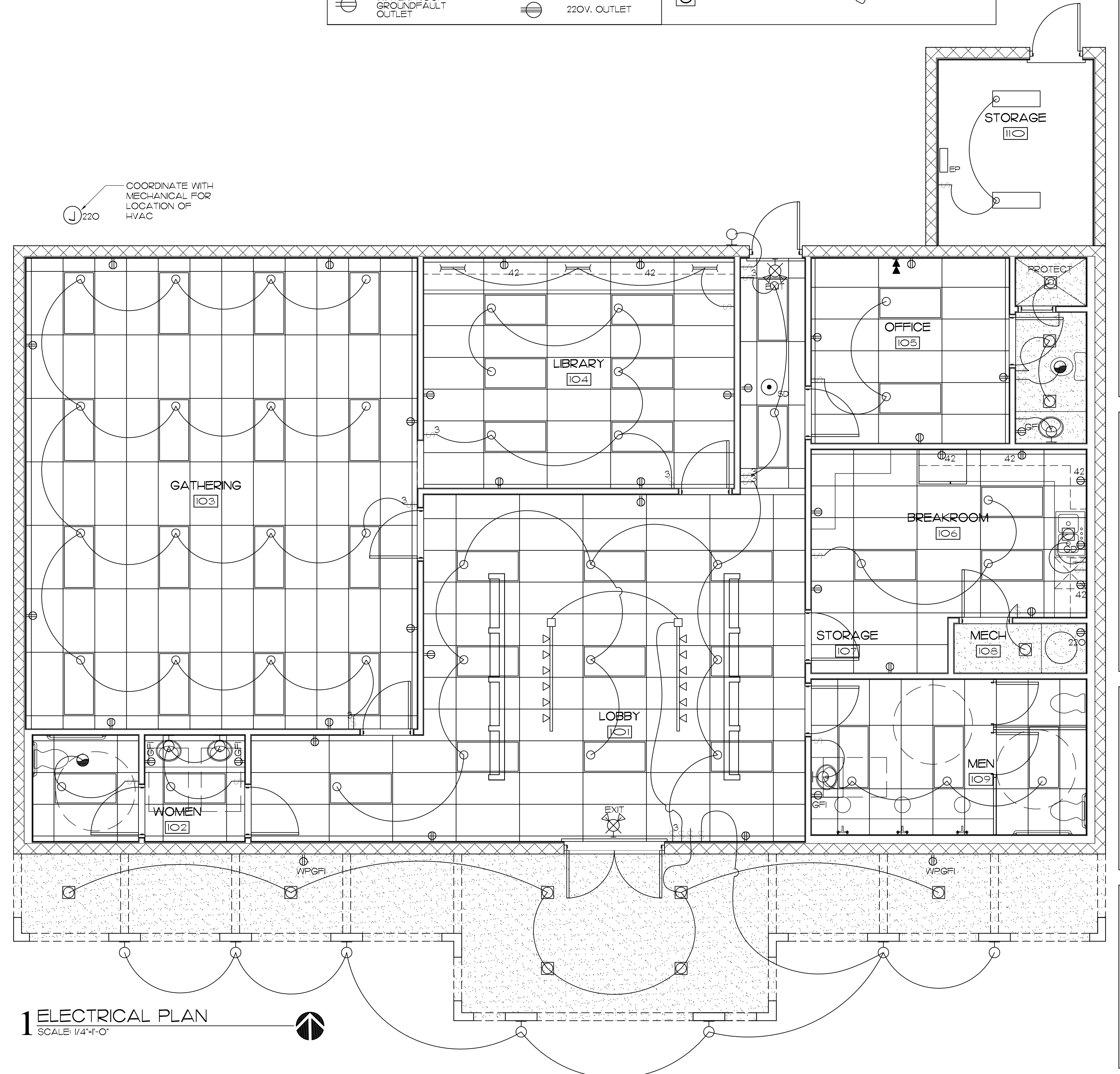
APR 28, 2009
DATE
REVISIONS

2009-603
PROJECT NUM.
SHEET NUMBER
A601
7 OF 10

1 REFLECTIVE CEILING PLAN
SCALE: 1/4"=1'-0"

Do not reproduce without permission from Hunn Designs 12402 Slide Rd Suite 203, Lubbock, Texas 79424 (806) 794-6700

ELECTRICAL SYMBOLS	
LIGHT FIXTURES	
	CEILING MOUNTED
	WITH PULL CHAIN
	WALL BRACKET - INTERIOR AND EXTERIOR
	RECESSED IN CEILING OR SOFFIT
	RECESSED "WALL WASHER" IN CEILING OR SOFFIT
	FLOURESCENT FIXTURE
	UNDER CABINET LIGHT
	RECESSED "PIN HOLE" IN CEILING OR SOFFIT
	WALL MOUNTED FLOODLIGHT
	EXIT-EMERGENCY LIGHT COMBO
CONVENIENCE OUTLETS	
	10V. DUPLEX OUTLET, 12" ABOVE FLOOR-TYP.
	10V. FOURPLEX OUTLET, 12" ABOVE FLOOR-TYP.
	DISTANCE ABOVE FLOOR, OTHER THAN 12"
	WATERPROOF GROUND-FALLT OUTLET
	DEDICATED CIRCUIT
	GROUND-FALLT OUTLET
	SWITCH-ED OUTLET
	FLOOR OUTLET
	220V. OUTLET
SWITCHES	
	SINGLE POLE SWITCH
	THREE WAY SWITCH
	FOUR WAY SWITCH
	DIMMER SWITCH
GENERAL	
	10V JUNCTION BOX
	220V JUNCTION BOX
	GARBAGE DISPOSAL
	EXHAUST FAN
	EXHAUST FAN W/ LIGHT
	WALL EXHAUST FAN
	ELECTRICAL PANEL
	HEAT LAMP W/LIGHT
	TELEVISION OUTLET
	PHONE/DATE OUTLET
	DBL. GANG PHONE/DATA
	GARAGE DOOR OPERATOR
	THERMOSTAT
	SMOKE DETECTOR
	PUSH BUTTON
	DOOR CHIMES
	CEILING FAN
	CEILING FAN W/ LIGHT



1 ELECTRICAL PLAN
SCALE: 1/4"=1'-0"

ENERGY
SMART
CONSTRUCTION
DESIGNED BY:
CHERIF AMOR

hd
HUNN
DESIGNS
www.hunn designs.com

**A REMODEL FOR
ISLAMIC CENTER**
2222 15th STREET LUBBOCK, TX 79401

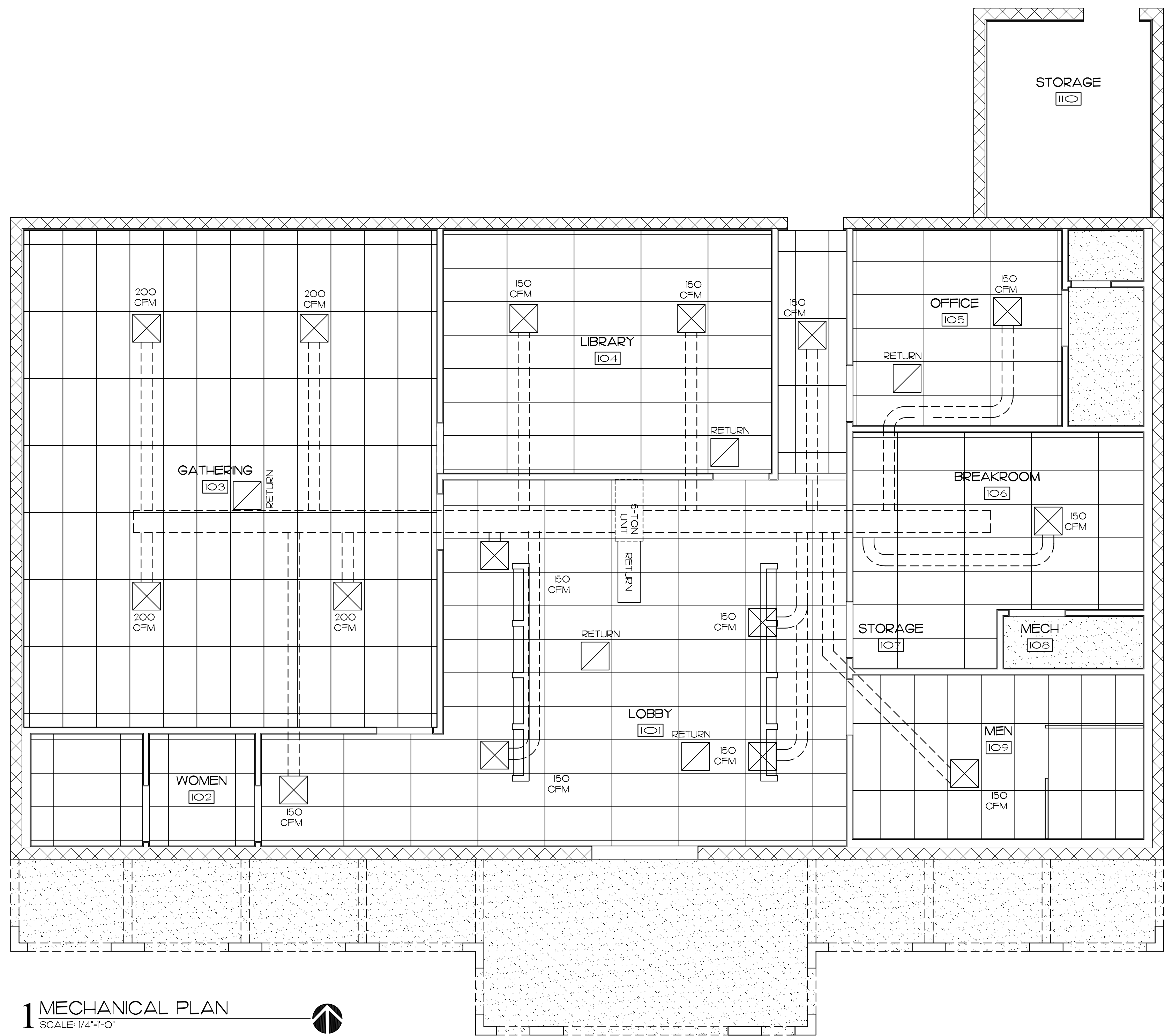
APR 28, 2009
DATE
REVISIONS

2009-603
PROJECT NUM.
SHEET NUMBER
A701
8 OF 10

Do not reproduce without permission from Hunn Designs 12402 Slide Rd Suite 203, Lubbock, Texas 79424 (806) 791-6700

APR 28, 2009
DATE
REVISIONS

2009-603
PROJECT NUM.
SHEET NUMBER
A801
9 OF 10



1 MECHANICAL PLAN
SCALE: 1/4"=1'-0"

Do not reproduce without permission from Hunn Designs 12402 Slide Rd Suite 203, Lubbock, Texas 79424 (806) 794-6700

For more details on this project see:

DESIGN MATTERS

(International Interior Design Association (IIDA))

<http://clients.criticalimpact.com/vm.cfm?i=b03e59fb4e647112>

AVALANCHE DAILY NEWSPAPER:

Come Together: Islamic Student Center opens, shows off work of interfaith groups

http://lubbockonline.com/stories/021410/fea_562846639.shtml

Islamic Center of the South Plains

Texas

Project Budget: \$850,000.00

Project Sq-Ft: 6400.00

Multipurpose Hall and extension of existing structure including architecture, interior design and landscape architecture.

Address: 3419 LaSalle Ave., Lubbock TX 79407

Cultural Student Center

Texas

Project Budget: \$500,000.00

Project Sq-Ft: 3,000

Designed and supervised the construction process—architecture, landscape architecture and interior design.

Tasks: 1) Conducted meetings with the Board of Trustees for data collection, 2) conducted meetings with community, 3) designed the project 4) performed sessions of feed back with local professional practitioners and educators, 5) made revisions, 6) conducted fundraising, 7) presented the final revisions to the community, and 8) supervised the construction process.

Address: 2222 15th Street, Lubbock, TX 79409

ICSP Bathrooms

Texas

Project Budget: 50,000.00

Project Sq.-Ft: 1200

Renovation: including planning, fund raising, and design.

Tasks: planning, community meeting, ICSP Board meeting, design, specification furniture, fixture, and equipment (FF&E), made revisions, conducted fund raising, and supervised the construction process.

Project Address: 3419 Lasalle Ave., Lubbock, TX 79407

Lobby and Conference Room

Texas

Project Budget: 250,000.00

Project Sq-Ft: Lobby and Conference Room

Renovation: including planning, fund raising, and design.

Tasks: planning, community meeting, ICSP Board meeting, design, specification furniture, fixture, and equipment (FF&E), made revisions, conducted fund raising, and will supervise the construction process.

Project Address: 3419 LaSalle Ave., Lubbock, TX 79407

Cherif Amor, Ph.D., EDRA, IDEC, & IIDA

Chair, Interior Design Department, Virginia Commonwealth University-Qatar

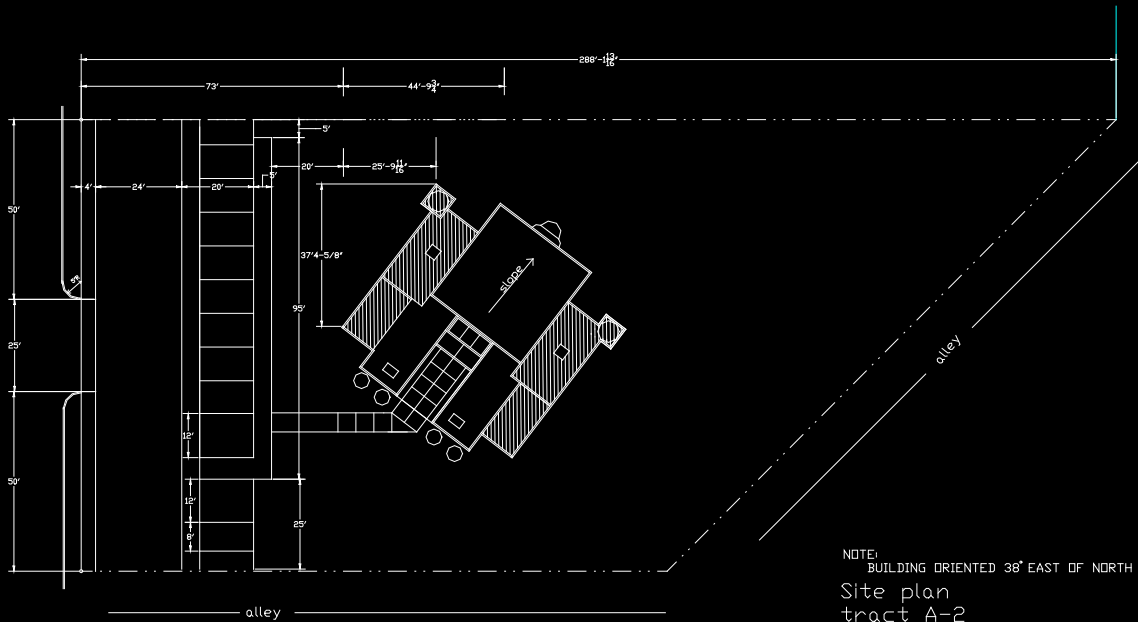
Chair Environmental Design Research Association, ID Network

mcAmor@vcu.edu

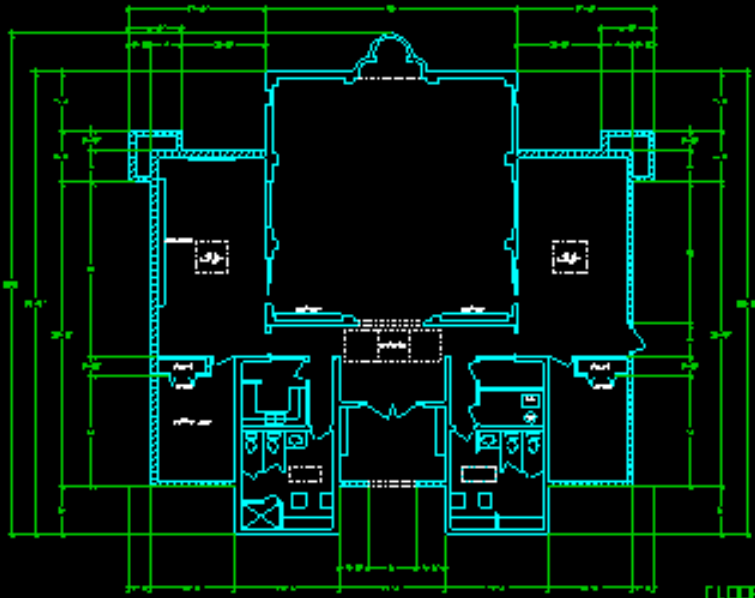
(974) 4402 0588—P.

(974) 4402 1425 —F.

ORIGINAL STRUCTURE

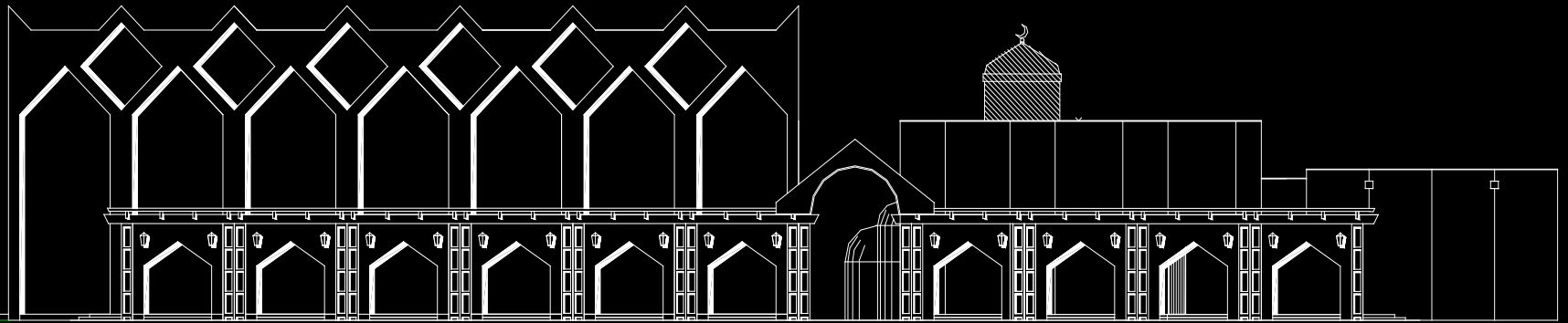


NOTE:
BUILDING ORIENTED 38° EAST OF NORTH
Site plan
tract A-2
North Arrow
Addition
25

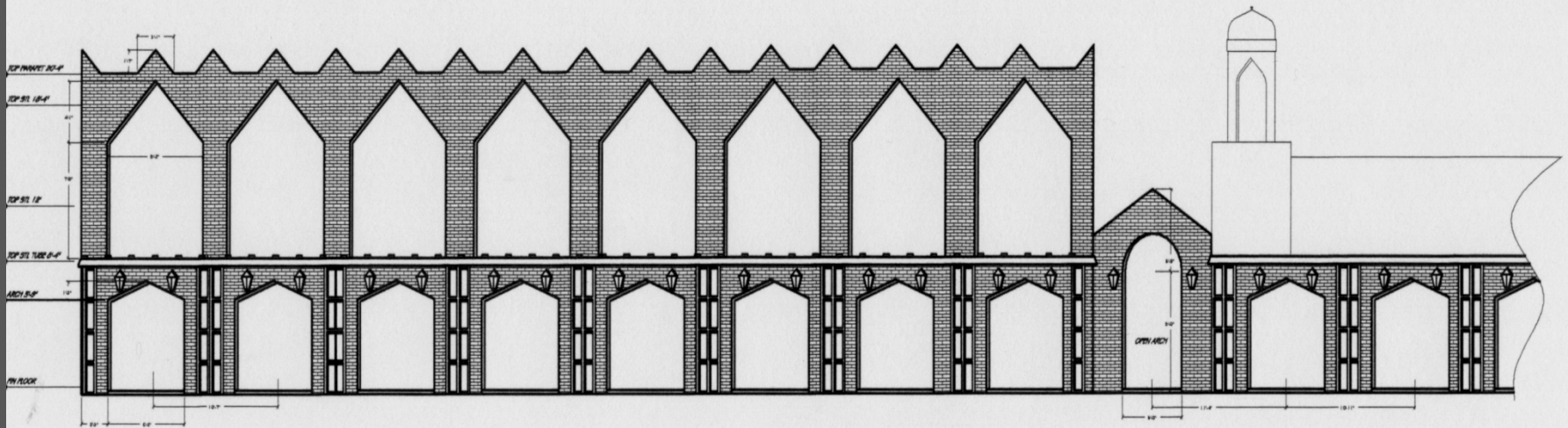


FLOOR PLAN
SCALE: 1/4"=1'-0"





Elevation
scale: 1"=10'-0"

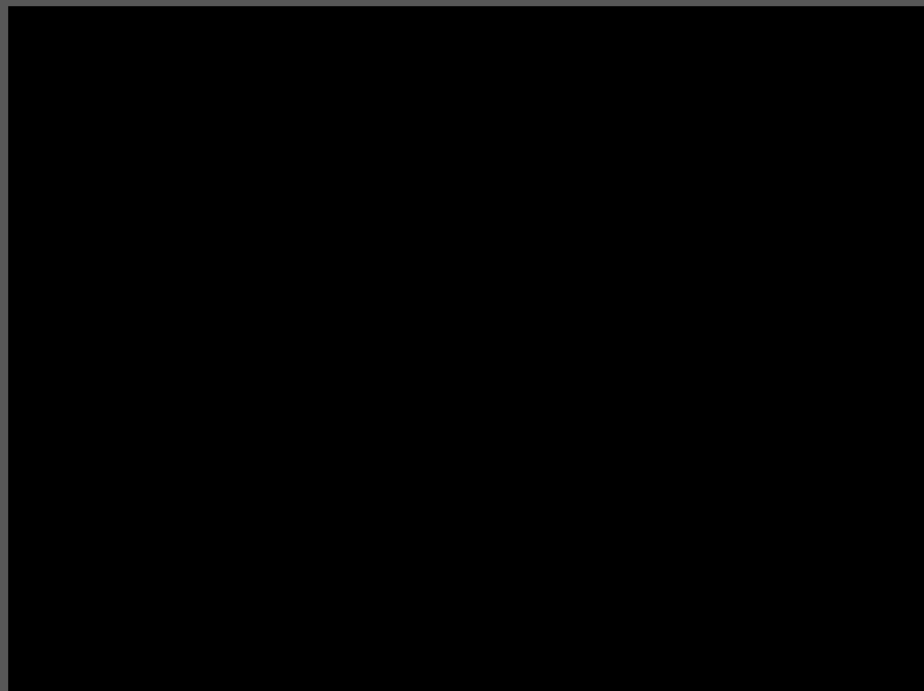
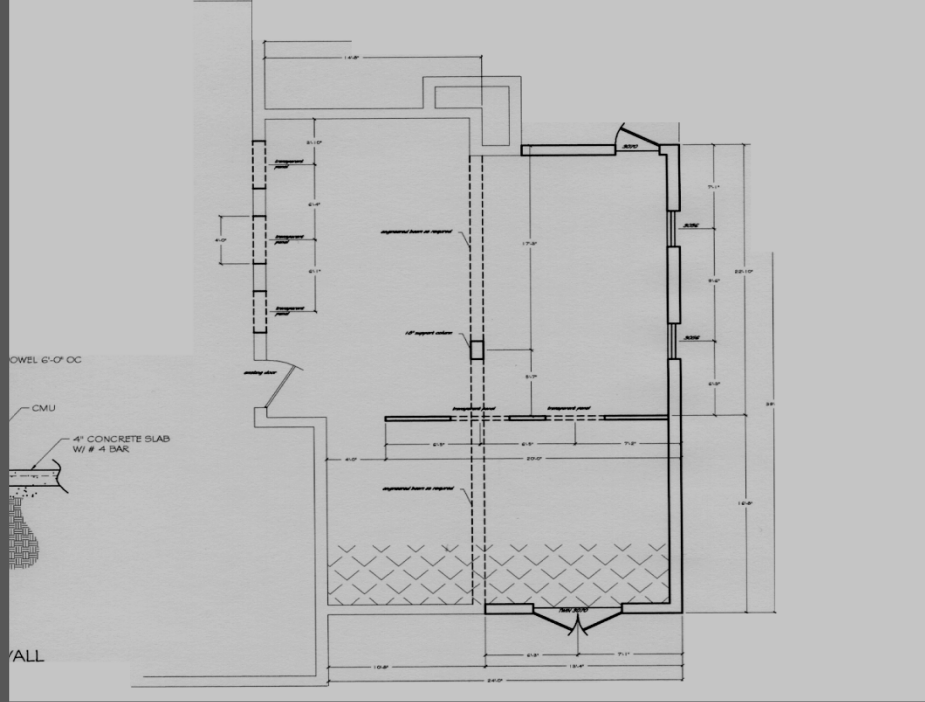


NORTH WEST ELEVATION NEW STRUCTURE

CONSTRUCTION PROGRESS



CONSTRUCTION PROGRESS



STUDENTS' INVOLVEMENT



NEW DEVELOPMENT



NEW DEVELOPMENT



Islamic Center of the South Plains

Texas

Project Budget: \$850,000.00

Project Sq-Ft: 6400.00

Multipurpose Hall and extension of existing structure including architecture, interior design and landscape architecture.

Address: 3419 LaSalle Ave., Lubbock TX 79407

Cultural Student Center

Texas

Project Budget: \$500,000.00

Project Sq-Ft: 3,000

Designed and supervised the construction process—architecture, landscape architecture and interior design.

Tasks: 1) Conducted meetings with the Board of Trustees for data collection, 2) conducted meetings with community, 3) designed the project 4) performed sessions of feed back with local professional practitioners and educators, 5) made revisions, 6) conducted fundraising, 7) presented the final revisions to the community, and 8) supervised the construction process.

Address: 2222 15th Street, Lubbock, TX 79409

ICSP Bathrooms

Texas

Project Budget: 50,000.00

Project Sq.-Ft: 1200

Renovation: including planning, fund raising, and design.

Tasks: planning, community meeting, ICSP Board meeting, design, specification furniture, fixture, and equipment (FF&E), made revisions, conducted fund raising, and supervised the construction process.

Project Address: 3419 Lasalle Ave., Lubbock, TX 79407

Lobby and Main Entry

Texas

Project Budget: 250,000.00

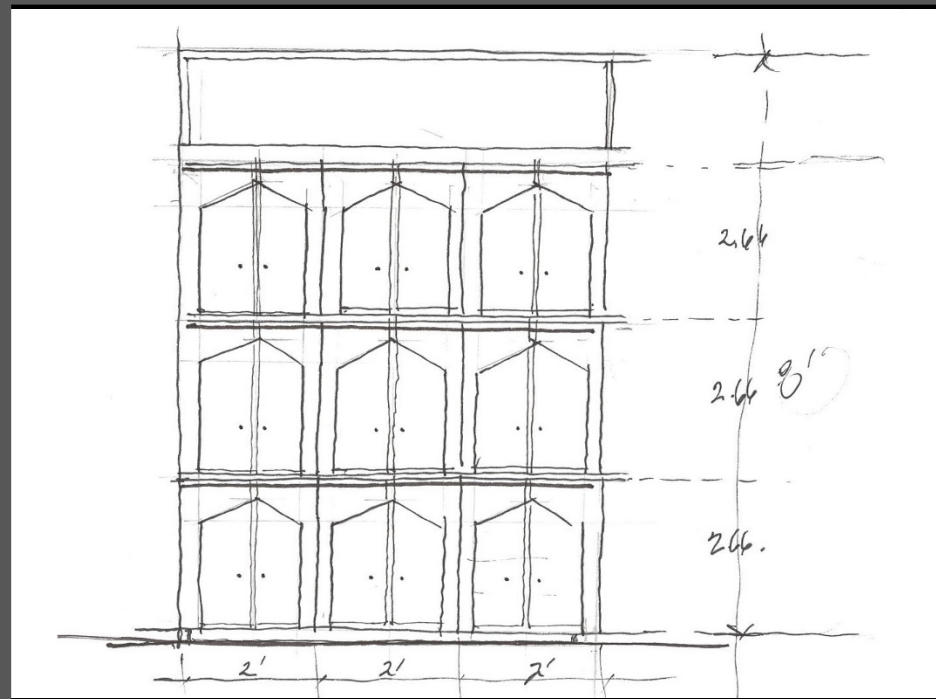
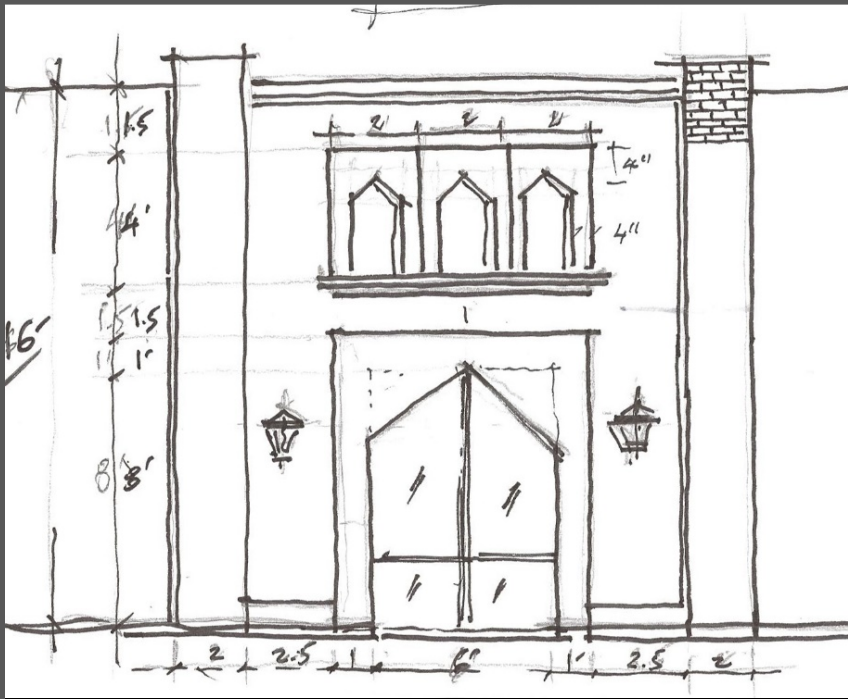
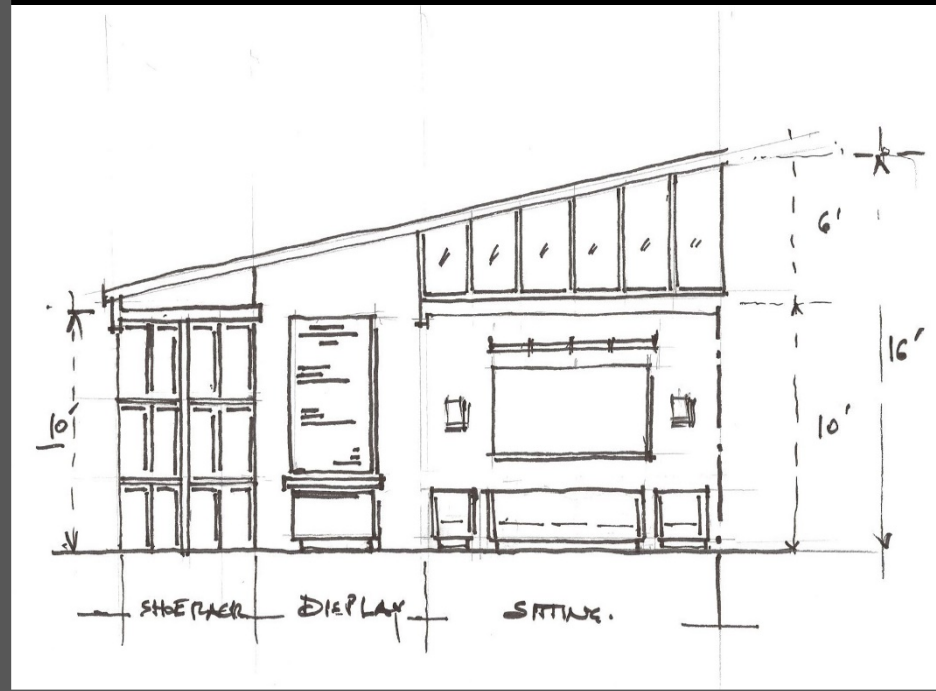
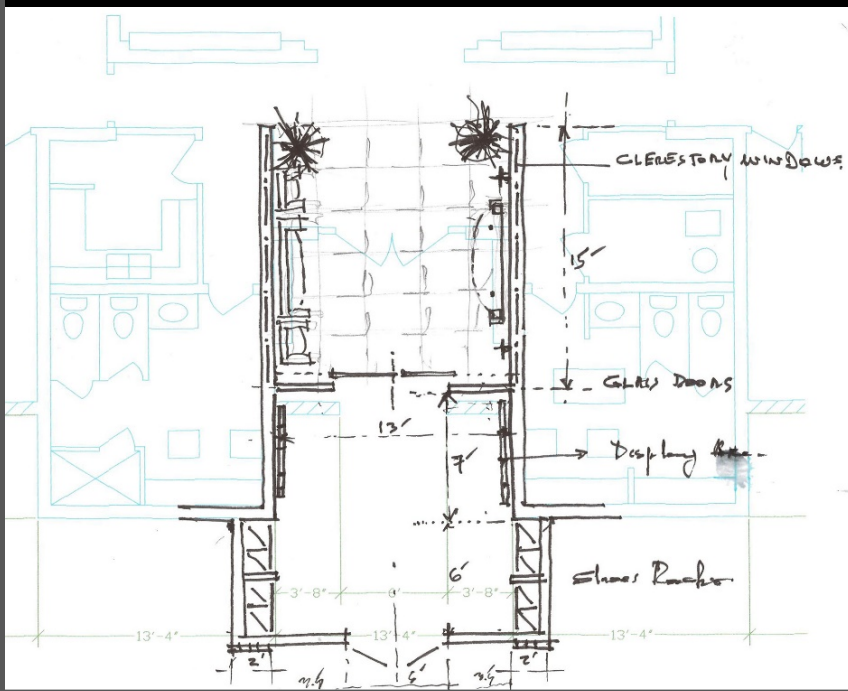
Project Sq-Ft: Lobby and Conference Room

Renovation: including planning, fund raising, and design.

Tasks: planning, community meeting, ICSP Board meeting, design, specification furniture, fixture, and equipment (FF&E), made revisions, conducted fund raising, and will supervise the construction process.

Project Address: 3419 LaSalle Ave., Lubbock, TX 79407

SCHEMATIC DEVELOPMENT



PROJECT UNDER CONSTRUCTION



BEFORE & AFTER



BEFORE & AFTER



For more details on this project, see Avalanche Journal report:
Removing barriers: Renovation makes mosque more inviting

http://lubbockonline.com/stories/093006/rel_093006085.shtml